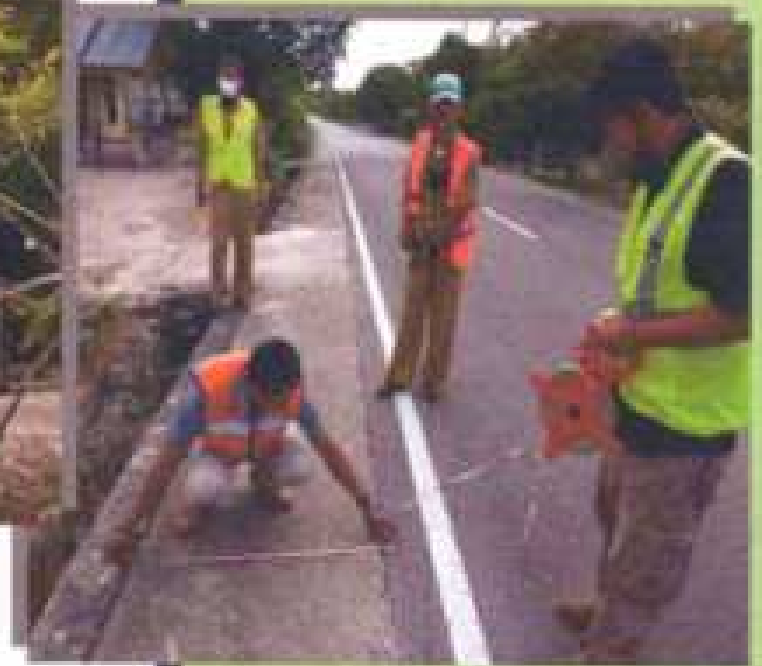
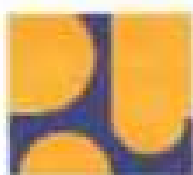


TAHUN ANGGARAN  
2021

# LAPORAN KEGIATAN OPERASIONAL P/KRMS KABUPATEN BELITUNG





## ABSTRACT

### **Provincial/ Road Management System**

**(P/KRMS) adalah alat bantu yang didesain**

**Khusus untuk keperluan Perencanaan, Pemrograman**

**Dan Penganggaran (PPP) yang dapat digunakan di tingkat**

**Provinsi dan Kabupaten**



03222~7 ΓΔZ0~0Δ2220 2Δ4Δ~02207Δ

**LAPORAN HASIL P/KRMS**

**DINAS PEKERJAAN UMUM DAN PERUMAHAN RAKYAT KABUPATEN BELITUNG**

Laporan Hasil Survey P/KRMS ini disusun sebagai hasil percepatan penanganan jalan dengan syarat membuat Perencanaan, Pemrograman dan Penganggaran (PPP).

**LEMBAR PENGESAHAN**

Menyetujui,  
Kepala Bidang Infrastruktur dan  
Pengembangan Wilayah Persempadan Belitung



**Wiguna Setiawan, ST, MT, M.Sc**  
NIP. 197809072003121004

Mengetahui,  
Kepala Bidang Lalu Lintas  
Pekja PLLAJ



**Suhri, S.Mp**  
NIP. 197109021992031004

Mengetahui,  
Kepala Dinas Pekerjaan Umum  
dan Perumahan Rakyat



**Ir. Agus M. Tanjung**  
NIP. 196308281991031002

## **KATA PENGANTAR**

Dengan mengucapkan puji dan syukur kehadirat Allah Swt, telah tersusunnya Laporan Hasil Survey Inventarisasi dan Kondisi Jalan dalam rangka pelaksanaan penerapan aplikasi PKRMS (*Provincial and Kabupaten Road Management System*) oleh Dinas Pekerjaan Umum dan Perumahan Rakyat Kabupaten Belitung.

Jalan yang telah dibangun dan dioperasikan akan mengalami perubahan kondisi sesuai bertambahnya umur jalan sehingga pada suatu saat dapat menghambat kegiatan masyarakat. Salah satu upaya untuk mengatasi hal tersebut, harus dilakukan dalam pengeloaab dan menejemen aser jalan adalah melakukan Survey Inventarisasi dan Kondisi Jalan.

Demikian laporan ini disusun sebagai gambaran operasional PKRMS (*Provincial and Kabupaten Road Management System*). Dinas Pekerjaan Umum dan Perumahan Rakyat Kabupaten Belitung.



| Ruas Jalan | Lebar (km) | Sedang (km) | Rusak Ringan (km) | Rusak Berat (km) | Pemeliharaan   | Tahun |
|------------|------------|-------------|-------------------|------------------|----------------|-------|
| 1.1        | 0.4        | 0.0         | 0.0               | 0.0              | Rehabilitation | 4     |
| 1.10       | 1.1        | 0.6         | 0.0               | 0.0              | Routine        | 99    |
| 1.11       | 0.1        | 0.0         | 0.0               | 0.0              | Routine        | 99    |
| 1.12       | 0.0        | 0.2         | 0.0               | 0.0              | Rehabilitation | 1     |
| 1.13.1     | 0.4        | 0.0         | 0.0               | 0.0              | Routine        | 99    |
| 1.13.2     | 0.0        | 0.0         | 0.0               | 0.0              | Routine        | 99    |
| 1.14       | 0.2        | 0.0         | 0.0               | 0.0              | Routine        | 99    |
| 1.15.1     | 0.4        | 0.0         | 0.0               | 0.0              | Routine        | 99    |
| 1.15.2     | 0.1        | 0.0         | 0.0               | 0.0              | Routine        | 99    |
| 1.16       | 0.5        | 0.3         | 0.0               | 0.0              | Periodic       | 1     |
| 1.17       | 0.2        | 0.1         | 0.0               | 0.0              | Routine        | 99    |
| 1.18       | 4.5        | 0.0         | 0.0               | 0.0              | Routine        | 99    |
| 1.19       | 0.2        | 0.0         | 0.0               | 0.0              | Routine        | 99    |
| 1.2        | 1.1        | 0.3         | 0.0               | 0.0              | Routine        | 99    |
| 1.20       | 0.6        | 0.1         | 0.0               | 0.0              | Routine        | 99    |
| 1.21       | 0.9        | 0.0         | 0.0               | 0.0              | Routine        | 99    |
| 1.22       | 0.5        | 0.1         | 0.0               | 0.0              | Routine        | 99    |
| 1.23       | 1.3        | 0.0         | 0.0               | 0.0              | Routine        | 99    |
| 1.24       | 1.0        | 0.2         | 0.8               | 0.0              | Rehabilitation | 1     |
| 1.25       | 0.9        | 0.2         | 0.0               | 0.0              | Periodic       | 2     |
| 1.26       | 0.1        | 0.1         | 0.0               | 0.0              | Routine        | 99    |
| 1.27       | 0.1        | 0.0         | 0.0               | 0.0              | Routine        | 99    |
| 1.28       | 2.3        | 0.0         | 0.0               | 0.0              | Routine        | 99    |
| 1.29       | 0.6        | 0.3         | 0.0               | 0.0              | Routine        | 99    |
| 1.3.1      | 1.0        | 0.1         | 0.0               | 0.0              | Routine        | 99    |
| 1.3.2      | 0.2        | 0.1         | 0.0               | 0.0              | Periodic       | 2     |
| 1.3.3      | 0.0        | 0.1         | 0.0               | 0.0              | Routine        | 99    |
| 1.3.4      | 0.0        | 0.0         | 0.0               | 0.0              | Routine        | 99    |
| 1.30       | 0.8        | 0.1         | 0.0               | 0.0              | Routine        | 99    |
| 1.31       | 0.2        | 0.0         | 0.0               | 0.0              | Routine        | 99    |
| 1.32       | 1.2        | 0.0         | 0.0               | 0.0              | Routine        | 99    |
| 1.33       | 0.7        | 0.0         | 0.0               | 0.0              | Routine        | 99    |
| 1.34       | 0.8        | 0.1         | 0.0               | 0.0              | Periodic       | 2     |
| 1.35       | 2.1        | 0.0         | 0.0               | 0.0              | Routine        | 99    |
| 1.36       | 0.1        | 0.0         | 0.0               | 0.0              | Routine        | 99    |
| 1.37       | 0.4        | 0.2         | 0.0               | 0.0              | Periodic       | 3     |
| 1.38       | 0.8        | 0.0         | 0.0               | 0.0              | Routine        | 99    |
| 1.39.1     | 0.9        | 0.0         | 0.0               | 0.0              | Routine        | 99    |
| 1.39.2     | 0.1        | 0.0         | 0.0               | 0.0              | Routine        | 99    |
| 1.39.3     | 1.0        | 0.0         | 0.0               | 0.0              | Routine        | 99    |
| 1.39.4     | 0.0        | 0.0         | 0.0               | 0.0              | Routine        | 99    |
| 1.4.1      | 1.6        | 0.0         | 0.0               | 0.0              | Routine        | 99    |
| 1.4.2      | 1.2        | 0.0         | 0.0               | 0.0              | Routine        | 99    |
| 1.40       | 0.6        | 0.3         | 0.0               | 0.0              | Routine        | 99    |
| 1.41       | 0.2        | 0.0         | 0.0               | 0.0              | Routine        | 99    |
| 1.42       | 1.5        | 0.0         | 0.0               | 0.0              | Routine        | 99    |
| 1.43       | 0.9        | 0.0         | 0.0               | 0.0              | Routine        | 99    |
| 1.44       | 0.2        | 0.1         | 0.0               | 0.0              | Routine        | 99    |
| 1.45       | 0.1        | 0.1         | 0.0               | 0.0              | Routine        | 99    |
| 1.47       | 0.6        | 0.0         | 0.0               | 0.0              | Routine        | 99    |
| 1.48       | 1.0        | 0.0         | 0.0               | 0.0              | Periodic       | 4     |
| 1.49       | 1.1        | 0.0         | 0.0               | 0.0              | Routine        | 99    |
| 1.5        | 1.7        | 0.0         | 0.0               | 0.0              | Routine        | 99    |
| 1.50       | 0.1        | 0.0         | 0.0               | 0.0              | Routine        | 99    |
| 1.51       | 0.4        | 0.0         | 0.0               | 0.0              | Routine        | 99    |
| 1.52       | 0.8        | 0.0         | 0.0               | 0.0              | Routine        | 99    |
| 1.53       | 0.2        | 0.0         | 0.0               | 0.0              | Routine        | 99    |
| 1.54.1     | 0.2        | 1.0         | 0.0               | 0.0              | Periodic       | 3     |

1 204

|         |     |     |     |     |                |    |
|---------|-----|-----|-----|-----|----------------|----|
| 1.54.2  | 0.8 | 0.0 | 0.0 | 0.0 | Routine        | 99 |
| 1.54.3  | 0.4 | 0.0 | 0.0 | 0.0 | Periodic       | 5  |
| 1.55    | 0.3 | 0.0 | 0.0 | 0.0 | Routine        | 99 |
| 1.56    | 0.6 | 0.0 | 0.0 | 0.0 | Routine        | 99 |
| 1.57.1  | 1.7 | 0.0 | 0.0 | 0.0 | Routine        | 99 |
| 1.57.2  | 0.5 | 0.0 | 0.0 | 0.0 | Routine        | 99 |
| 1.58    | 0.4 | 0.0 | 0.0 | 0.0 | Routine        | 99 |
| 1.59    | 2.9 | 0.0 | 0.0 | 0.0 | Routine        | 99 |
| 1.6     | 1.6 | 0.6 | 0.0 | 0.0 | Routine        | 99 |
| 1.60.1  | 0.3 | 0.0 | 0.0 | 0.0 | Routine        | 99 |
| 1.60.2  | 0.3 | 0.1 | 0.0 | 0.0 | Routine        | 99 |
| 1.60.3  | 0.3 | 0.0 | 0.0 | 0.0 | Routine        | 99 |
| 1.61.1  | 0.2 | 0.0 | 0.0 | 0.0 | Rehabilitation | 5  |
| 1.61.2  | 0.1 | 0.0 | 0.0 | 0.0 | Periodic       | 3  |
| 1.62    | 0.4 | 1.0 | 0.0 | 0.0 | Routine        | 99 |
| 1.63    | 0.4 | 0.0 | 0.0 | 0.0 | Periodic       | 2  |
| 1.64.1  | 0.7 | 0.6 | 0.1 | 0.0 | Rehabilitation | 1  |
| 1.64.10 | 0.1 | 0.1 | 0.0 | 0.0 | Rehabilitation | 2  |
| 1.64.11 | 0.2 | 0.0 | 0.0 | 0.0 | Routine        | 99 |
| 1.64.12 | 0.1 | 0.0 | 0.0 | 0.0 | Routine        | 99 |
| 1.64.13 | 0.0 | 0.1 | 0.0 | 0.0 | Periodic       | 3  |
| 1.64.14 | 0.0 | 0.1 | 0.0 | 0.0 | Periodic       | 5  |
| 1.64.2  | 0.6 | 0.2 | 0.0 | 0.0 | Periodic       | 3  |
| 1.64.3  | 0.1 | 0.0 | 0.0 | 0.0 | Routine        | 99 |
| 1.64.4  | 0.8 | 0.0 | 0.0 | 0.0 | Routine        | 99 |
| 1.64.5  | 0.5 | 0.0 | 0.0 | 0.0 | Routine        | 99 |
| 1.64.6  | 0.1 | 0.2 | 0.0 | 0.0 | Periodic       | 1  |
| 1.64.7  | 0.1 | 0.0 | 0.1 | 0.0 | Routine        | 99 |
| 1.64.8  | 0.0 | 0.1 | 0.0 | 0.0 | Periodic       | 1  |
| 1.64.9  | 0.2 | 0.0 | 0.0 | 0.0 | Routine        | 99 |
| 1.65.1  | 0.1 | 0.3 | 0.0 | 0.0 | Periodic       | 3  |
| 1.65.2  | 0.3 | 0.0 | 0.0 | 0.0 | Routine        | 99 |
| 1.65.3  | 0.0 | 0.1 | 0.0 | 0.0 | Periodic       | 1  |
| 1.66.1  | 0.2 | 0.0 | 0.0 | 0.0 | Routine        | 99 |
| 1.66.2  | 0.0 | 0.3 | 0.0 | 0.1 | Periodic       | 4  |
| 1.66.3  | 0.3 | 0.0 | 0.0 | 0.0 | Routine        | 99 |
| 1.66.4  | 0.5 | 0.0 | 0.0 | 0.0 | Routine        | 99 |
| 1.66.5  | 0.2 | 0.0 | 0.0 | 0.0 | Routine        | 99 |
| 1.67.1  | 1.0 | 0.0 | 0.0 | 0.0 | Routine        | 99 |
| 1.67.2  | 0.5 | 0.0 | 0.0 | 0.0 | Routine        | 99 |
| 1.68    | 0.6 | 0.1 | 0.0 | 0.0 | Routine        | 99 |
| 1.69.1  | 1.6 | 0.0 | 0.0 | 0.0 | Routine        | 99 |
| 1.69.2  | 1.1 | 0.0 | 0.0 | 0.0 | Routine        | 99 |
| 1.7.1   | 0.7 | 0.3 | 0.0 | 0.2 | Upgrade        | 2  |
| 1.7.2   | 0.2 | 0.0 | 0.0 | 0.0 | Routine        | 99 |
| 1.7.3   | 0.1 | 0.0 | 0.0 | 0.0 | Routine        | 99 |
| 1.70    | 1.6 | 0.4 | 0.4 | 1.1 | Routine        | 99 |
| 1.71    | 0.0 | 0.5 | 1.0 | 0.0 | Rehabilitation | 1  |
| 1.72.1  | 5.7 | 0.0 | 0.0 | 0.0 | Routine        | 99 |
| 1.72.2  | 0.4 | 0.0 | 0.0 | 0.0 | Routine        | 99 |
| 1.73    | 0.1 | 0.0 | 0.0 | 0.3 | Rehabilitation | 1  |
| 1.74    | 0.4 | 0.0 | 0.0 | 0.0 | Routine        | 99 |
| 1.75    | 0.4 | 0.0 | 0.0 | 0.0 | Routine        | 99 |
| 1.76    | 0.3 | 0.0 | 0.0 | 0.0 | Routine        | 99 |
| 1.77    | 0.3 | 0.0 | 0.0 | 0.0 | Rehabilitation | 4  |
| 1.78    | 0.3 | 0.0 | 0.0 | 0.0 | Rehabilitation | 5  |
| 1.79.1  | 1.7 | 0.0 | 0.0 | 0.0 | Routine        | 99 |
| 1.79.2  | 0.2 | 0.0 | 0.0 | 0.0 | Routine        | 99 |
| 1.8     | 0.5 | 0.0 | 0.0 | 0.0 | Routine        | 99 |
| 1.80    | 1.1 | 0.3 | 0.0 | 0.0 | Periodic       | 5  |
| 1.81    | 1.4 | 0.2 | 0.0 | 0.0 | Routine        | 99 |

1709

|          |      |     |     |     |                |    |
|----------|------|-----|-----|-----|----------------|----|
| 1.82.1   | 0.8  | 0.0 | 0.0 | 0.0 | Routine        | 99 |
| 1.82.2   | 0.1  | 0.3 | 0.0 | 0.0 | Periodic       | 4  |
| 1.82.3   | 0.0  | 0.2 | 0.1 | 0.0 | Routine        | 99 |
| 1.83     | 0.9  | 0.2 | 0.0 | 0.0 | Routine        | 99 |
| 1.84     | 1.0  | 0.0 | 0.0 | 0.0 | Routine        | 99 |
| 1.85     | 1.1  | 0.0 | 0.0 | 0.0 | Routine        | 99 |
| 1.86     | 1.4  | 0.0 | 0.0 | 0.0 | Routine        | 99 |
| 1.9      | 0.8  | 0.2 | 0.0 | 0.0 | Routine        | 99 |
| 10       | 6.4  | 1.2 | 0.1 | 0.3 | Upgrade        | 3  |
| 11       | 7.2  | 3.3 | 0.2 | 0.1 | Periodic       | 4  |
| 12       | 4.9  | 1.7 | 0.0 | 0.1 | Periodic       | 4  |
| 13       | 3.8  | 1.5 | 0.3 | 0.2 | Routine        | 99 |
| 14       | 13.9 | 0.1 | 0.0 | 0.0 | Routine        | 99 |
| 15       | 6.3  | 0.8 | 0.0 | 0.0 | Routine        | 99 |
| 16       | 10.0 | 0.2 | 0.0 | 0.0 | Routine        | 99 |
| 17       | 7.4  | 0.1 | 0.0 | 0.0 | Routine        | 99 |
| 18       | 3.8  | 0.0 | 0.0 | 0.0 | Routine        | 99 |
| 19       | 6.0  | 1.4 | 0.0 | 0.0 | Routine        | 99 |
| 2        | 3.7  | 0.3 | 0.0 | 0.0 | Routine        | 99 |
| 20       | 13.1 | 0.0 | 0.0 | 0.0 | Routine        | 99 |
| 21       | 11.4 | 0.1 | 0.1 | 0.0 | Routine        | 99 |
| 22       | 6.4  | 0.9 | 0.0 | 0.0 | Routine        | 99 |
| 23       | 4.6  | 1.8 | 0.3 | 0.6 | Rehabilitation | 1  |
| 24       | 1.6  | 0.4 | 0.1 | 8.7 | Upgrade        | 2  |
| 25       | 13.9 | 0.0 | 0.0 | 0.0 | Routine        | 99 |
| 26       | 8.3  | 0.0 | 0.0 | 0.0 | Routine        | 99 |
| 27       | 8.7  | 0.0 | 0.0 | 0.0 | Routine        | 99 |
| 28       | 2.1  | 0.0 | 0.0 | 0.0 | Periodic       | 5  |
| 29       | 10.2 | 0.3 | 0.0 | 0.0 | Routine        | 99 |
| 3        | 8.8  | 0.0 | 0.0 | 0.0 | Routine        | 99 |
| 30       | 13.8 | 0.9 | 0.0 | 0.3 | Routine        | 99 |
| 31       | 2.3  | 0.0 | 0.0 | 3.1 | Upgrade        | 3  |
| 32       | 3.7  | 0.0 | 0.0 | 0.0 | Routine        | 99 |
| 33       | 6.0  | 0.0 | 0.0 | 0.0 | Routine        | 99 |
| 34       | 3.4  | 0.1 | 0.0 | 0.0 | Routine        | 99 |
| 35       | 15.6 | 0.0 | 0.0 | 0.0 | Routine        | 99 |
| 36.1     | 0.3  | 0.1 | 0.0 | 0.0 | Routine        | 99 |
| 36.10    | 0.0  | 0.2 | 0.0 | 0.0 | Periodic       | 3  |
| 36.100   | 0.1  | 0.2 | 0.0 | 0.0 | Periodic       | 4  |
| 36.101   | 0.2  | 0.0 | 0.0 | 0.0 | Routine        | 99 |
| 36.102.1 | 0.0  | 0.5 | 0.0 | 0.0 | Routine        | 99 |
| 36.102.2 | 0.2  | 0.0 | 0.0 | 0.0 | Rehabilitation | 3  |
| 36.103   | 0.2  | 0.0 | 0.0 | 0.0 | Routine        | 99 |
| 36.104   | 0.3  | 0.1 | 0.0 | 0.0 | Routine        | 99 |
| 36.105   | 0.2  | 0.0 | 0.0 | 0.0 | Routine        | 99 |
| 36.106.1 | 0.7  | 0.0 | 0.0 | 0.0 | Routine        | 99 |
| 36.106.2 | 0.4  | 0.0 | 0.0 | 0.0 | Routine        | 99 |
| 36.107.1 | 0.8  | 0.0 | 0.0 | 0.0 | Routine        | 99 |
| 36.107.2 | 0.0  | 0.2 | 0.0 | 0.0 | Rehabilitation | 1  |
| 36.107.3 | 0.0  | 0.1 | 0.1 | 0.0 | Periodic       | 1  |
| 36.108   | 0.6  | 0.0 | 0.0 | 0.0 | Rehabilitation | 3  |
| 36.109   | 0.6  | 0.0 | 0.0 | 0.0 | Routine        | 99 |
| 36.11    | 0.0  | 0.3 | 0.0 | 0.0 | Periodic       | 3  |
| 36.110   | 0.3  | 0.0 | 0.0 | 0.0 | Routine        | 99 |
| 36.111   | 0.5  | 0.0 | 0.0 | 0.0 | Routine        | 99 |
| 36.112   | 1.0  | 0.0 | 0.0 | 0.0 | Routine        | 99 |
| 36.113   | 0.0  | 0.4 | 0.0 | 0.0 | Periodic       | 3  |
| 36.114   | 0.1  | 0.3 | 0.0 | 0.0 | Periodic       | 1  |
| 36.115   | 0.4  | 0.1 | 0.0 | 0.0 | Routine        | 99 |
| 36.116   | 0.2  | 0.0 | 0.0 | 0.1 | Upgrade        | 2  |
| 36.117.1 | 0.1  | 0.3 | 0.0 | 0.0 | Routine        | 99 |

1/24



|          |     |     |     |     |                |    |
|----------|-----|-----|-----|-----|----------------|----|
| 36.117.2 | 0.0 | 0.2 | 0.2 | 0.0 | Periodic       | 1  |
| 36.117.3 | 0.0 | 0.0 | 0.2 | 0.0 | Rehabilitation | 1  |
| 36.118.1 | 0.0 | 0.0 | 0.4 | 0.0 | Rehabilitation | 1  |
| 36.118.2 | 0.0 | 0.1 | 0.1 | 0.0 | Periodic       | 2  |
| 36.118.3 | 0.2 | 0.0 | 0.0 | 0.0 | Routine        | 99 |
| 36.118.4 | 0.0 | 0.0 | 0.2 | 0.0 | Rehabilitation | 1  |
| 36.118.5 | 0.0 | 0.2 | 0.0 | 0.0 | Periodic       | 1  |
| 36.118.6 | 0.1 | 0.1 | 0.0 | 0.0 | Periodic       | 1  |
| 36.118.7 | 0.1 | 0.1 | 0.0 | 0.0 | Periodic       | 3  |
| 36.118.8 | 0.0 | 0.0 | 0.1 | 0.0 | Rehabilitation | 1  |
| 36.119   | 0.2 | 0.0 | 0.0 | 0.0 | Periodic       | 5  |
| 36.12    | 0.2 | 0.1 | 0.0 | 0.0 | Routine        | 99 |
| 36.120.1 | 0.3 | 0.2 | 0.0 | 0.0 | Periodic       | 5  |
| 36.120.2 | 0.0 | 0.1 | 0.0 | 0.0 | Routine        | 99 |
| 36.121   | 0.0 | 0.1 | 0.0 | 0.0 | Routine        | 99 |
| 36.122   | 1.4 | 0.0 | 0.0 | 0.0 | Routine        | 99 |
| 36.123   | 0.0 | 0.4 | 0.0 | 0.0 | Periodic       | 1  |
| 36.124.1 | 0.0 | 0.0 | 0.3 | 0.0 | Rehabilitation | 1  |
| 36.124.2 | 0.1 | 0.0 | 0.0 | 0.0 | Routine        | 99 |
| 36.125.1 | 0.0 | 0.1 | 0.2 | 0.0 | Rehabilitation | 1  |
| 36.125.2 | 0.0 | 0.4 | 0.1 | 0.0 | Periodic       | 1  |
| 36.126   | 0.1 | 0.8 | 0.0 | 0.0 | Routine        | 99 |
| 36.127.1 | 0.0 | 0.4 | 0.0 | 0.0 | Routine        | 99 |
| 36.127.2 | 0.1 | 0.3 | 0.0 | 0.0 | Periodic       | 1  |
| 36.128   | 0.0 | 0.0 | 0.0 | 0.4 | Rehabilitation | 1  |
| 36.129.1 | 0.0 | 0.1 | 0.0 | 0.5 | Rehabilitation | 1  |
| 36.129.2 | 0.0 | 0.0 | 0.1 | 0.0 | Routine        | 99 |
| 36.13.1  | 0.5 | 0.0 | 0.0 | 0.0 | Routine        | 99 |
| 36.13.2  | 0.3 | 0.0 | 0.0 | 0.0 | Routine        | 99 |
| 36.130   | 0.0 | 0.3 | 0.0 | 0.0 | Periodic       | 4  |
| 36.131   | 0.0 | 0.3 | 0.0 | 0.0 | Periodic       | 4  |
| 36.132   | 0.6 | 0.0 | 0.0 | 1.8 | Upgrade        | 2  |
| 36.133   | 0.5 | 0.1 | 0.0 | 0.0 | Routine        | 99 |
| 36.134   | 1.0 | 0.1 | 0.0 | 0.0 | Routine        | 99 |
| 36.135.1 | 1.0 | 0.0 | 0.0 | 0.0 | Routine        | 99 |
| 36.135.2 | 0.2 | 0.0 | 0.0 | 0.0 | Routine        | 99 |
| 36.135.3 | 0.7 | 0.0 | 0.0 | 0.0 | Routine        | 99 |
| 36.135.4 | 0.4 | 0.0 | 0.0 | 0.0 | Routine        | 99 |
| 36.135.5 | 0.1 | 0.0 | 0.0 | 0.0 | Routine        | 99 |
| 36.136.1 | 1.0 | 0.0 | 0.0 | 0.0 | Routine        | 99 |
| 36.136.2 | 0.5 | 0.0 | 0.0 | 0.3 | Upgrade        | 2  |
| 36.136.3 | 0.2 | 0.0 | 0.0 | 0.0 | Routine        | 99 |
| 36.137   | 1.0 | 0.1 | 0.0 | 0.1 | Upgrade        | 1  |
| 36.138   | 0.2 | 0.0 | 0.0 | 0.0 | Routine        | 99 |
| 36.139   | 0.2 | 0.0 | 0.0 | 0.0 | Routine        | 99 |
| 36.14    | 0.0 | 0.0 | 0.0 | 1.8 | Upgrade        | 4  |
| 36.140   | 0.1 | 0.1 | 0.0 | 0.0 | Periodic       | 4  |
| 36.141   | 0.3 | 0.0 | 0.0 | 0.0 | Routine        | 99 |
| 36.142   | 0.0 | 0.5 | 0.0 | 0.0 | Rehabilitation | 1  |
| 36.143   | 0.0 | 0.2 | 0.0 | 0.0 | Periodic       | 2  |
| 36.144   | 0.0 | 0.4 | 0.0 | 0.0 | Periodic       | 1  |
| 36.15    | 0.3 | 0.0 | 0.0 | 0.0 | Routine        | 99 |
| 36.16    | 0.2 | 0.1 | 0.0 | 0.0 | Periodic       | 5  |
| 36.17    | 0.6 | 0.0 | 0.0 | 0.7 | Routine        | 99 |
| 36.18    | 0.0 | 0.0 | 0.0 | 1.7 | Upgrade        | 2  |
| 36.19    | 0.3 | 0.0 | 0.0 | 0.0 | Routine        | 99 |
| 36.2.1   | 0.3 | 0.3 | 0.0 | 0.0 | Routine        | 99 |
| 36.2.2   | 0.1 | 0.1 | 0.0 | 0.0 | Periodic       | 2  |
| 36.20    | 1.0 | 0.0 | 0.0 | 0.0 | Routine        | 99 |
| 36.21.1  | 0.4 | 0.0 | 0.0 | 0.0 | Routine        | 99 |
| 36.21.2  | 0.5 | 0.0 | 0.0 | 0.0 | Routine        | 99 |

|         |     |     |     |     |                |    |
|---------|-----|-----|-----|-----|----------------|----|
| 36.22   | 0.5 | 0.0 | 0.0 | 0.0 | Routine        | 99 |
| 36.23   | 1.3 | 0.0 | 0.0 | 0.0 | Routine        | 99 |
| 36.24   | 0.3 | 0.0 | 0.0 | 0.0 | Routine        | 99 |
| 36.25.1 | 0.2 | 0.3 | 0.0 | 0.0 | Periodic       | 4  |
| 36.25.2 | 0.1 | 0.2 | 0.0 | 0.0 | Periodic       | 4  |
| 36.26.1 | 0.1 | 0.1 | 0.0 | 0.0 | Routine        | 99 |
| 36.26.2 | 0.1 | 0.1 | 0.0 | 0.0 | Routine        | 99 |
| 36.27   | 0.2 | 0.0 | 0.0 | 0.0 | Periodic       | 5  |
| 36.28.1 | 0.6 | 0.0 | 0.0 | 0.0 | Routine        | 99 |
| 36.28.2 | 0.2 | 0.0 | 0.0 | 0.7 | Upgrade        | 2  |
| 36.29   | 1.5 | 0.0 | 0.0 | 0.0 | Routine        | 99 |
| 36.3    | 0.2 | 0.1 | 0.0 | 0.0 | Routine        | 99 |
| 36.30.1 | 0.6 | 0.2 | 0.0 | 0.0 | Periodic       | 4  |
| 36.30.2 | 0.7 | 0.1 | 0.0 | 0.0 | Periodic       | 5  |
| 36.31   | 0.4 | 0.0 | 0.0 | 0.0 | Routine        | 99 |
| 36.32.1 | 0.1 | 0.0 | 0.0 | 0.0 | Routine        | 99 |
| 36.32.2 | 0.1 | 0.0 | 0.0 | 0.0 | Routine        | 99 |
| 36.33   | 0.4 | 0.0 | 0.0 | 0.0 | Routine        | 99 |
| 36.34.1 | 0.4 | 0.0 | 0.0 | 0.0 | Routine        | 99 |
| 36.34.2 | 0.2 | 0.0 | 0.0 | 0.0 | Routine        | 99 |
| 36.35.1 | 0.2 | 0.1 | 0.0 | 0.0 | Periodic       | 4  |
| 36.35.2 | 0.3 | 0.0 | 0.0 | 0.0 | Routine        | 99 |
| 36.36   | 0.2 | 0.0 | 0.0 | 0.0 | Routine        | 99 |
| 36.37.1 | 1.3 | 0.0 | 0.0 | 0.4 | Upgrade        | 2  |
| 36.37.2 | 2.5 | 0.0 | 0.0 | 0.0 | Routine        | 99 |
| 36.37.3 | 0.0 | 0.0 | 0.0 | 1.2 | Upgrade        | 4  |
| 36.38.1 | 0.0 | 0.3 | 1.8 | 0.0 | Rehabilitation | 1  |
| 36.38.2 | 0.0 | 0.0 | 0.0 | 0.0 | Routine        | 99 |
| 36.39.1 | 0.4 | 0.0 | 0.0 | 0.0 | Routine        | 99 |
| 36.39.2 | 0.2 | 0.0 | 0.0 | 0.0 | Routine        | 99 |
| 36.39.3 | 0.2 | 0.0 | 0.0 | 0.0 | Routine        | 99 |
| 36.4    | 0.5 | 0.0 | 0.0 | 0.0 | Routine        | 99 |
| 36.40.1 | 0.6 | 0.1 | 0.0 | 0.0 | Routine        | 99 |
| 36.40.2 | 0.6 | 0.1 | 0.0 | 0.0 | Periodic       | 5  |
| 36.40.3 | 0.4 | 0.0 | 0.0 | 0.0 | Routine        | 99 |
| 36.41   | 0.2 | 0.0 | 0.0 | 0.0 | Routine        | 99 |
| 36.42   | 0.6 | 0.1 | 0.0 | 0.0 | Routine        | 99 |
| 36.43   | 0.0 | 0.0 | 0.0 | 3.0 | Upgrade        | 5  |
| 36.44.1 | 0.8 | 0.1 | 0.0 | 0.0 | Periodic       | 2  |
| 36.44.2 | 0.9 | 0.0 | 0.0 | 0.0 | Routine        | 99 |
| 36.45   | 0.2 | 0.0 | 0.0 | 0.0 | Routine        | 99 |
| 36.46.1 | 0.0 | 0.5 | 0.4 | 0.0 | Rehabilitation | 1  |
| 36.46.2 | 0.0 | 0.0 | 0.1 | 0.0 | Rehabilitation | 1  |
| 36.46.3 | 0.0 | 0.0 | 0.0 | 0.2 | Upgrade        | 4  |
| 36.47.1 | 0.3 | 0.0 | 0.0 | 0.0 | Routine        | 99 |
| 36.47.2 | 0.3 | 0.0 | 0.0 | 0.0 | Routine        | 99 |
| 36.47.3 | 0.0 | 0.0 | 0.0 | 0.0 | Routine        | 99 |
| 36.48.1 | 0.4 | 0.2 | 0.0 | 0.0 | Routine        | 99 |
| 36.48.2 | 0.1 | 0.4 | 0.0 | 0.0 | Routine        | 99 |
| 36.48.3 | 0.4 | 0.0 | 0.0 | 0.0 | Routine        | 99 |
| 36.48.4 | 0.3 | 0.0 | 0.0 | 0.0 | Routine        | 99 |
| 36.49.1 | 0.0 | 0.2 | 0.3 | 0.0 | Periodic       | 2  |
| 36.49.2 | 0.0 | 0.0 | 0.0 | 0.1 | Upgrade        | 4  |
| 36.5.1  | 0.6 | 0.0 | 0.0 | 0.0 | Routine        | 99 |
| 36.5.2  | 0.0 | 0.2 | 0.0 | 0.0 | Periodic       | 1  |
| 36.50   | 0.3 | 0.0 | 0.0 | 0.0 | Routine        | 99 |
| 36.51   | 0.2 | 0.0 | 0.0 | 0.0 | Periodic       | 2  |
| 36.52   | 0.4 | 0.0 | 0.0 | 0.0 | Routine        | 99 |
| 36.53.1 | 0.7 | 0.5 | 0.0 | 0.1 | Routine        | 99 |
| 36.53.2 | 0.2 | 0.0 | 0.0 | 0.0 | Routine        | 99 |
| 36.53.3 | 0.0 | 0.2 | 0.0 | 0.0 | Periodic       | 4  |

hraf

|         |     |     |     |     |                |    |
|---------|-----|-----|-----|-----|----------------|----|
| 36.53.4 | 0.4 | 0.2 | 0.0 | 0.0 | Routine        | 99 |
| 36.54.1 | 0.6 | 0.2 | 0.0 | 0.0 | Routine        | 99 |
| 36.54.2 | 0.2 | 0.0 | 0.0 | 0.0 | Routine        | 99 |
| 36.55   | 0.0 | 0.3 | 0.0 | 0.0 | Periodic       | 4  |
| 36.56   | 0.1 | 0.5 | 0.0 | 0.0 | Rehabilitation | 2  |
| 36.57   | 0.0 | 0.1 | 0.0 | 0.1 | Routine        | 99 |
| 36.58   | 0.3 | 0.0 | 0.0 | 0.0 | Routine        | 99 |
| 36.59.1 | 0.5 | 0.0 | 0.0 | 0.0 | Routine        | 99 |
| 36.59.2 | 0.0 | 0.0 | 0.0 | 0.1 | Upgrade        | 4  |
| 36.6    | 0.1 | 0.2 | 0.0 | 0.0 | Periodic       | 3  |
| 36.60   | 0.0 | 0.1 | 0.2 | 0.0 | Periodic       | 4  |
| 36.61.1 | 1.1 | 0.0 | 0.0 | 0.0 | Routine        | 99 |
| 36.61.2 | 0.4 | 0.0 | 0.0 | 0.0 | Routine        | 99 |
| 36.62   | 0.0 | 0.1 | 0.0 | 0.0 | Routine        | 99 |
| 36.63   | 0.5 | 0.1 | 0.0 | 0.0 | Routine        | 99 |
| 36.64.1 | 0.6 | 0.1 | 0.0 | 0.0 | Routine        | 99 |
| 36.64.2 | 0.1 | 0.0 | 0.0 | 0.0 | Routine        | 99 |
| 36.65   | 0.2 | 0.0 | 0.0 | 0.0 | Routine        | 99 |
| 36.66   | 0.2 | 0.0 | 0.0 | 0.0 | Routine        | 99 |
| 36.67.1 | 0.0 | 0.2 | 0.0 | 0.0 | Periodic       | 4  |
| 36.67.2 | 0.0 | 0.2 | 0.1 | 0.0 | Periodic       | 2  |
| 36.68.1 | 0.4 | 0.0 | 0.0 | 0.0 | Routine        | 99 |
| 36.68.2 | 0.0 | 0.1 | 0.0 | 0.0 | Periodic       | 4  |
| 36.69   | 0.5 | 0.0 | 0.0 | 0.0 | Routine        | 99 |
| 36.7    | 0.0 | 0.5 | 0.0 | 0.0 | Periodic       | 2  |
| 36.70.1 | 0.9 | 0.0 | 0.0 | 0.0 | Routine        | 99 |
| 36.70.2 | 0.7 | 0.0 | 0.0 | 0.0 | Routine        | 99 |
| 36.70.3 | 1.0 | 0.0 | 0.0 | 0.0 | Routine        | 99 |
| 36.71   | 0.3 | 0.0 | 0.0 | 0.0 | Routine        | 99 |
| 36.72.1 | 0.4 | 0.0 | 0.0 | 0.0 | Routine        | 99 |
| 36.72.2 | 0.5 | 0.0 | 0.0 | 0.0 | Routine        | 99 |
| 36.73.1 | 0.1 | 0.0 | 0.0 | 0.0 | Routine        | 99 |
| 36.73.2 | 0.2 | 0.2 | 0.0 | 0.0 | Routine        | 99 |
| 36.73.3 | 0.0 | 0.3 | 0.0 | 0.0 | Periodic       | 3  |
| 36.73.4 | 0.1 | 0.0 | 0.0 | 0.0 | Routine        | 99 |
| 36.73.5 | 0.1 | 0.0 | 0.0 | 0.0 | Routine        | 99 |
| 36.73.6 | 0.1 | 0.0 | 0.0 | 0.0 | Routine        | 99 |
| 36.74   | 0.7 | 0.0 | 0.0 | 0.0 | Routine        | 99 |
| 36.75   | 0.2 | 1.1 | 0.0 | 0.0 | Routine        | 99 |
| 36.76.1 | 0.0 | 0.4 | 0.0 | 0.0 | Periodic       | 3  |
| 36.76.2 | 0.0 | 0.6 | 0.2 | 0.1 | Rehabilitation | 1  |
| 36.76.3 | 0.0 | 0.5 | 0.2 | 0.0 | Rehabilitation | 1  |
| 36.76.4 | 0.0 | 0.1 | 0.0 | 0.0 | Periodic       | 2  |
| 36.76.5 | 0.0 | 0.1 | 0.0 | 0.0 | Periodic       | 2  |
| 36.76.6 | 0.0 | 0.1 | 0.0 | 0.0 | Periodic       | 4  |
| 36.77.1 | 0.5 | 0.0 | 0.0 | 0.0 | Routine        | 99 |
| 36.77.2 | 0.7 | 0.0 | 0.0 | 0.0 | Routine        | 99 |
| 36.78.1 | 1.3 | 0.3 | 0.0 | 0.0 | Routine        | 99 |
| 36.78.2 | 0.3 | 0.0 | 0.0 | 0.0 | Routine        | 99 |
| 36.78.3 | 0.3 | 0.0 | 0.0 | 0.2 | Upgrade        | 2  |
| 36.78.4 | 0.2 | 0.0 | 0.0 | 0.0 | Routine        | 99 |
| 36.79.1 | 1.4 | 0.2 | 0.1 | 0.0 | Routine        | 99 |
| 36.79.2 | 0.3 | 0.0 | 0.0 | 0.0 | Routine        | 99 |
| 36.79.3 | 0.3 | 0.1 | 0.0 | 0.0 | Periodic       | 4  |
| 36.79.4 | 0.5 | 0.0 | 0.0 | 1.0 | Upgrade        | 2  |
| 36.8.1  | 0.5 | 0.3 | 0.0 | 0.0 | Routine        | 99 |
| 36.8.2  | 0.0 | 0.1 | 0.0 | 0.0 | Periodic       | 1  |
| 36.80   | 0.0 | 0.2 | 0.0 | 0.0 | Periodic       | 1  |
| 36.81   | 0.0 | 0.2 | 0.0 | 0.0 | Periodic       | 4  |
| 36.82   | 0.0 | 0.3 | 0.0 | 0.0 | Periodic       | 3  |
| 36.83   | 0.0 | 0.0 | 0.0 | 0.2 | Rehabilitation | 1  |

1 top

|         |     |     |     |     |                |    |
|---------|-----|-----|-----|-----|----------------|----|
| 36.84   | 0.2 | 0.0 | 0.0 | 0.0 | Routine        | 99 |
| 36.85   | 0.0 | 0.3 | 0.0 | 0.0 | Periodic       | 1  |
| 36.86   | 0.8 | 0.0 | 0.0 | 0.0 | Routine        | 99 |
| 36.87   | 0.4 | 0.0 | 0.0 | 0.0 | Routine        | 99 |
| 36.88.1 | 0.2 | 0.0 | 0.0 | 0.0 | Routine        | 99 |
| 36.88.2 | 0.1 | 0.0 | 0.0 | 0.0 | Routine        | 99 |
| 36.88.3 | 0.1 | 0.0 | 0.0 | 0.0 | Routine        | 99 |
| 36.89.1 | 0.3 | 0.2 | 0.0 | 0.0 | Routine        | 99 |
| 36.89.2 | 0.1 | 0.6 | 0.0 | 0.0 | Periodic       | 1  |
| 36.89.3 | 0.0 | 0.0 | 0.1 | 0.0 | Routine        | 99 |
| 36.9.1  | 0.0 | 0.2 | 0.1 | 0.0 | Rehabilitation | 1  |
| 36.9.2  | 0.1 | 0.1 | 0.0 | 0.0 | Periodic       | 3  |
| 36.90.1 | 0.7 | 0.0 | 0.0 | 0.0 | Routine        | 99 |
| 36.90.2 | 0.0 | 0.3 | 0.0 | 0.0 | Periodic       | 3  |
| 36.90.3 | 0.3 | 0.0 | 0.0 | 0.0 | Routine        | 99 |
| 36.90.4 | 0.2 | 0.0 | 0.0 | 0.0 | Routine        | 99 |
| 36.91   | 0.2 | 0.0 | 0.0 | 0.0 | Rehabilitation | 2  |
| 36.92   | 0.2 | 0.0 | 0.0 | 0.0 | Routine        | 99 |
| 36.93   | 0.0 | 0.1 | 0.0 | 0.0 | Periodic       | 3  |
| 36.94   | 0.4 | 0.1 | 0.0 | 0.0 | Periodic       | 5  |
| 36.95   | 0.2 | 0.0 | 0.0 | 0.0 | Routine        | 99 |
| 36.96.1 | 0.0 | 0.2 | 0.0 | 0.0 | Periodic       | 1  |
| 36.96.2 | 0.0 | 0.2 | 0.0 | 0.0 | Periodic       | 4  |
| 36.97   | 0.5 | 0.0 | 0.0 | 0.0 | Routine        | 99 |
| 36.98   | 0.0 | 0.1 | 0.2 | 0.0 | Rehabilitation | 1  |
| 36.99   | 0.4 | 0.1 | 0.0 | 0.0 | Routine        | 99 |
| 37.1    | 0.6 | 0.0 | 0.0 | 0.0 | Routine        | 99 |
| 37.10   | 0.4 | 0.0 | 0.0 | 0.0 | Routine        | 99 |
| 37.11.1 | 1.8 | 0.0 | 0.0 | 0.0 | Routine        | 99 |
| 37.11.2 | 0.4 | 0.0 | 0.0 | 0.0 | Routine        | 99 |
| 37.11.3 | 0.4 | 0.0 | 0.0 | 0.1 | Upgrade        | 2  |
| 37.12   | 0.7 | 0.3 | 0.0 | 0.0 | Routine        | 99 |
| 37.13   | 4.8 | 0.4 | 0.0 | 0.0 | Routine        | 99 |
| 37.14   | 0.8 | 0.0 | 0.0 | 0.0 | Routine        | 99 |
| 37.15   | 0.2 | 0.0 | 0.0 | 0.1 | Upgrade        | 2  |
| 37.16.1 | 2.1 | 0.0 | 0.0 | 0.4 | Upgrade        | 2  |
| 37.16.2 | 0.1 | 0.0 | 0.0 | 0.0 | Routine        | 99 |
| 37.16.3 | 1.1 | 0.0 | 0.0 | 0.0 | Routine        | 99 |
| 37.16.4 | 1.1 | 0.0 | 0.0 | 0.0 | Routine        | 99 |
| 37.17   | 0.7 | 0.1 | 0.0 | 0.0 | Routine        | 99 |
| 37.18   | 0.7 | 0.1 | 0.0 | 0.0 | Routine        | 99 |
| 37.19   | 1.0 | 0.0 | 0.0 | 0.0 | Routine        | 99 |
| 37.2.1  | 1.0 | 0.0 | 0.0 | 0.0 | Routine        | 99 |
| 37.2.2  | 0.7 | 0.2 | 0.1 | 0.0 | Routine        | 99 |
| 37.20   | 0.0 | 0.0 | 0.0 | 1.7 | Upgrade        | 4  |
| 37.31   | 1.0 | 0.0 | 0.0 | 0.0 | Routine        | 99 |
| 37.22   | 2.1 | 0.0 | 0.0 | 0.0 | Routine        | 99 |
| 37.23.1 | 0.0 | 0.5 | 0.0 | 0.0 | Routine        | 99 |
| 37.23.2 | 0.0 | 0.0 | 0.0 | 0.2 | Upgrade        | 3  |
| 37.23.3 | 0.3 | 0.0 | 0.0 | 0.0 | Routine        | 99 |
| 37.24   | 0.0 | 0.0 | 0.0 | 1.6 | Rehabilitation | 1  |
| 37.25   | 2.6 | 0.3 | 0.0 | 0.0 | Routine        | 99 |
| 37.26.1 | 0.9 | 0.1 | 0.0 | 0.0 | Routine        | 99 |
| 37.26.2 | 0.9 | 0.0 | 0.0 | 0.0 | Routine        | 99 |
| 37.26.3 | 0.0 | 0.2 | 0.0 | 0.0 | Routine        | 99 |
| 37.27.1 | 0.8 | 0.0 | 0.1 | 0.0 | Routine        | 99 |
| 37.27.2 | 1.0 | 0.0 | 0.0 | 0.0 | Routine        | 99 |
| 37.28   | 4.3 | 0.0 | 0.0 | 0.0 | Routine        | 99 |
| 37.29   | 0.5 | 0.0 | 0.0 | 0.2 | Upgrade        | 2  |
| 37.3.1  | 0.3 | 0.0 | 0.0 | 0.2 | Routine        | 99 |
| 37.3.2  | 0.5 | 0.0 | 0.0 | 0.0 | Routine        | 99 |

1704

|         |     |     |     |     |                |    |
|---------|-----|-----|-----|-----|----------------|----|
| 37.30.1 | 0.3 | 0.0 | 0.0 | 0.0 | Routine        | 99 |
| 37.30.2 | 0.9 | 0.0 | 0.0 | 0.0 | Routine        | 99 |
| 37.30.3 | 1.7 | 0.0 | 0.0 | 0.0 | Routine        | 99 |
| 37.31   | 1.0 | 0.1 | 0.0 | 0.0 | Routine        | 99 |
| 37.32.1 | 0.0 | 0.7 | 1.0 | 0.0 | Rehabilitation | 1  |
| 37.32.2 | 0.6 | 0.1 | 0.0 | 0.0 | Rehabilitation | 1  |
| 37.33.1 | 1.1 | 0.2 | 0.0 | 0.0 | Periodic       | 4  |
| 37.33.2 | 0.3 | 0.0 | 0.0 | 0.0 | Routine        | 99 |
| 37.33.3 | 0.1 | 0.0 | 0.0 | 0.1 | Upgrade        | 2  |
| 37.33.4 | 0.5 | 0.0 | 0.0 | 0.0 | Routine        | 99 |
| 37.34   | 0.9 | 0.0 | 0.0 | 0.0 | Routine        | 99 |
| 37.35   | 0.0 | 0.0 | 0.0 | 0.5 | Upgrade        | 4  |
| 37.36.1 | 1.6 | 0.0 | 0.0 | 0.0 | Routine        | 99 |
| 37.36.2 | 0.7 | 0.0 | 0.0 | 0.0 | Routine        | 99 |
| 37.36.3 | 0.7 | 0.0 | 0.0 | 0.0 | Routine        | 99 |
| 37.37   | 0.4 | 0.0 | 0.0 | 0.0 | Routine        | 99 |
| 37.38.1 | 0.4 | 0.0 | 0.0 | 0.0 | Routine        | 99 |
| 37.38.2 | 0.7 | 0.0 | 0.0 | 0.0 | Routine        | 99 |
| 37.4.1  | 1.2 | 0.0 | 0.0 | 0.0 | Routine        | 99 |
| 37.4.2  | 0.3 | 0.0 | 0.0 | 0.0 | Routine        | 99 |
| 37.5    | 0.6 | 0.0 | 0.0 | 0.9 | Upgrade        | 2  |
| 37.6    | 0.8 | 0.0 | 0.0 | 0.0 | Routine        | 99 |
| 37.7    | 1.1 | 0.2 | 0.0 | 0.0 | Routine        | 99 |
| 37.8.1  | 0.4 | 0.0 | 0.0 | 0.0 | Routine        | 99 |
| 37.8.2  | 0.1 | 0.0 | 0.0 | 0.2 | Upgrade        | 2  |
| 37.9    | 0.6 | 0.1 | 0.0 | 0.0 | Routine        | 99 |
| 38.1.1  | 2.2 | 0.0 | 0.0 | 0.1 | Routine        | 99 |
| 38.1.2  | 1.2 | 0.3 | 0.0 | 0.0 | Periodic       | 5  |
| 38.10   | 1.0 | 0.2 | 0.0 | 0.3 | Periodic       | 3  |
| 38.11.1 | 0.6 | 0.0 | 0.0 | 0.0 | Routine        | 99 |
| 38.11.2 | 0.0 | 0.0 | 0.0 | 0.0 | Routine        | 99 |
| 38.11.3 | 0.2 | 0.0 | 0.0 | 0.0 | Routine        | 99 |
| 38.12   | 1.3 | 0.0 | 0.0 | 0.0 | Routine        | 99 |
| 38.13   | 1.0 | 0.0 | 0.0 | 0.0 | Routine        | 99 |
| 38.2    | 2.4 | 0.0 | 0.0 | 0.0 | Routine        | 99 |
| 38.3.1  | 0.3 | 0.0 | 0.0 | 0.0 | Routine        | 99 |
| 38.3.2  | 1.5 | 0.1 | 0.0 | 0.0 | Routine        | 99 |
| 38.4.1  | 0.5 | 0.2 | 0.1 | 0.0 | Rehabilitation | 1  |
| 38.4.2  | 0.6 | 0.3 | 0.0 | 0.1 | Upgrade        | 2  |
| 38.5    | 1.4 | 0.0 | 0.0 | 0.0 | Routine        | 99 |
| 38.6.1  | 2.0 | 0.0 | 0.0 | 0.0 | Routine        | 99 |
| 38.6.2  | 0.3 | 0.0 | 0.0 | 0.0 | Routine        | 99 |
| 38.6.3  | 0.1 | 0.0 | 0.0 | 0.0 | Routine        | 99 |
| 38.6.4  | 0.4 | 0.0 | 0.0 | 0.0 | Routine        | 99 |
| 38.7    | 2.5 | 0.0 | 0.0 | 0.0 | Routine        | 99 |
| 38.8.1  | 0.5 | 0.0 | 0.0 | 0.0 | Routine        | 99 |
| 38.8.2  | 0.5 | 0.0 | 0.0 | 0.0 | Routine        | 99 |
| 38.8.3  | 0.1 | 0.0 | 0.0 | 0.0 | Routine        | 99 |
| 38.8.4  | 1.0 | 0.3 | 0.0 | 0.0 | Routine        | 99 |
| 38.8.5  | 0.1 | 0.1 | 0.0 | 0.0 | Periodic       | 4  |
| 38.9.1  | 0.0 | 0.0 | 0.0 | 1.3 | Upgrade        | 4  |
| 38.9.2  | 0.0 | 0.0 | 0.0 | 0.3 | Upgrade        | 4  |
| 39.1    | 4.0 | 0.1 | 0.0 | 0.0 | Routine        | 99 |
| 39.10.1 | 0.5 | 0.0 | 0.0 | 0.0 | Routine        | 99 |
| 39.10.2 | 0.6 | 0.0 | 0.0 | 0.0 | Routine        | 99 |
| 39.10.3 | 0.9 | 0.0 | 0.0 | 0.0 | Routine        | 99 |
| 39.11   | 0.8 | 0.0 | 0.0 | 0.0 | Routine        | 99 |
| 39.12   | 0.3 | 0.0 | 0.0 | 0.0 | Routine        | 99 |
| 39.13   | 0.2 | 0.0 | 0.0 | 0.0 | Periodic       | 4  |
| 39.14   | 0.1 | 0.0 | 0.0 | 0.0 | Routine        | 99 |
| 39.15.1 | 0.0 | 0.2 | 0.0 | 0.3 | Rehabilitation | 1  |

104

|         |      |     |     |     |                |    |
|---------|------|-----|-----|-----|----------------|----|
| 39.15.2 | 0.0  | 0.1 | 0.0 | 0.0 | Periodic       | 2  |
| 39.16   | 0.0  | 0.1 | 0.0 | 0.0 | Routine        | 99 |
| 39.17.1 | 0.1  | 0.1 | 0.0 | 0.0 | Routine        | 99 |
| 39.17.2 | 0.8  | 0.0 | 0.1 | 0.0 | Routine        | 99 |
| 39.17.3 | 1.0  | 0.0 | 0.0 | 0.0 | Routine        | 99 |
| 39.18   | 0.0  | 0.2 | 0.0 | 0.0 | Periodic       | 4  |
| 39.19.1 | 2.3  | 0.0 | 0.0 | 0.0 | Routine        | 99 |
| 39.19.2 | 0.3  | 0.0 | 0.0 | 0.0 | Routine        | 99 |
| 39.19.3 | 0.4  | 0.1 | 0.0 | 0.3 | Rehabilitation | 1  |
| 39.19.4 | 0.4  | 0.0 | 0.0 | 0.0 | Routine        | 99 |
| 39.19.5 | 0.4  | 0.0 | 0.0 | 0.0 | Routine        | 99 |
| 39.19.6 | 0.0  | 0.0 | 0.0 | 1.7 | Rehabilitation | 1  |
| 39.2    | 4.7  | 0.1 | 0.0 | 0.0 | Routine        | 99 |
| 39.20.1 | 0.2  | 0.1 | 0.0 | 0.5 | Rehabilitation | 1  |
| 39.20.2 | 0.0  | 0.0 | 0.0 | 0.9 | Rehabilitation | 1  |
| 39.20.3 | 0.0  | 0.0 | 0.0 | 1.3 | Rehabilitation | 1  |
| 39.20.4 | 0.0  | 0.0 | 0.0 | 0.8 | Rehabilitation | 1  |
| 39.20.5 | 0.0  | 0.0 | 0.0 | 0.1 | Rehabilitation | 1  |
| 39.20.6 | 0.0  | 0.0 | 0.0 | 0.3 | Rehabilitation | 1  |
| 39.20.7 | 0.0  | 0.0 | 0.0 | 0.1 | Rehabilitation | 2  |
| 39.21   | 2.3  | 0.1 | 0.0 | 4.4 | Rehabilitation | 1  |
| 39.22.1 | 1.1  | 0.0 | 0.0 | 0.0 | Routine        | 99 |
| 39.22.2 | 0.4  | 0.0 | 0.0 | 0.0 | Routine        | 99 |
| 39.22.3 | 2.1  | 0.0 | 0.0 | 0.0 | Routine        | 99 |
| 39.23.1 | 0.5  | 0.6 | 0.3 | 0.0 | Periodic       | 4  |
| 39.23.2 | 0.0  | 0.5 | 0.0 | 0.0 | Periodic       | 1  |
| 39.23.3 | 0.2  | 0.2 | 0.0 | 0.0 | Periodic       | 1  |
| 39.24.1 | 0.3  | 0.6 | 0.0 | 0.0 | Routine        | 99 |
| 39.24.2 | 0.5  | 0.2 | 0.0 | 0.0 | Periodic       | 4  |
| 39.24.3 | 0.0  | 0.3 | 0.0 | 0.0 | Periodic       | 1  |
| 39.25   | 0.4  | 0.2 | 0.0 | 0.0 | Periodic       | 2  |
| 39.3.1  | 0.5  | 0.1 | 0.0 | 0.0 | Periodic       | 4  |
| 39.3.2  | 0.4  | 0.0 | 0.0 | 0.0 | Routine        | 99 |
| 39.3.3  | 0.0  | 0.1 | 0.3 | 0.0 | Periodic       | 2  |
| 39.3.4  | 0.0  | 0.0 | 0.0 | 0.1 | Rehabilitation | 1  |
| 39.3.5  | 0.7  | 0.1 | 0.0 | 0.0 | Routine        | 99 |
| 39.3.6  | 0.0  | 0.1 | 0.0 | 0.1 | Rehabilitation | 1  |
| 39.4    | 0.0  | 0.3 | 0.1 | 0.0 | Periodic       | 2  |
| 39.5.1  | 0.0  | 0.1 | 0.4 | 0.0 | Rehabilitation | 1  |
| 39.5.2  | 0.2  | 0.0 | 0.0 | 0.0 | Routine        | 99 |
| 39.5.3  | 0.2  | 0.0 | 0.0 | 0.0 | Routine        | 99 |
| 39.6    | 0.3  | 0.0 | 0.0 | 0.5 | Upgrade        | 2  |
| 39.7    | 0.6  | 0.0 | 0.0 | 0.0 | Routine        | 99 |
| 39.8    | 0.3  | 0.0 | 0.0 | 0.0 | Routine        | 99 |
| 39.9.1  | 1.9  | 0.0 | 0.0 | 0.0 | Routine        | 99 |
| 39.9.2  | 0.0  | 0.0 | 0.0 | 0.0 | Routine        | 99 |
| 39.9.3  | 0.3  | 0.0 | 0.0 | 0.0 | Routine        | 99 |
| 39.9.4  | 0.3  | 0.0 | 0.0 | 0.0 | Routine        | 99 |
| 4       | 10.7 | 0.1 | 0.0 | 0.0 | Routine        | 99 |
| 40.1.1  | 1.5  | 0.0 | 0.0 | 0.0 | Routine        | 99 |
| 40.1.2  | 0.3  | 0.0 | 0.0 | 0.0 | Routine        | 99 |
| 40.1.3  | 0.1  | 0.0 | 0.0 | 0.0 | Routine        | 99 |
| 40.1.4  | 0.1  | 0.0 | 0.0 | 0.0 | Routine        | 99 |
| 40.1.5  | 0.1  | 0.0 | 0.0 | 0.0 | Routine        | 99 |
| 40.1.6  | 0.1  | 0.0 | 0.0 | 0.0 | Routine        | 99 |
| 40.1.7  | 0.1  | 0.0 | 0.0 | 0.0 | Routine        | 99 |
| 40.1.8  | 0.1  | 0.0 | 0.0 | 0.0 | Routine        | 99 |
| 40.2.1  | 0.9  | 0.0 | 0.0 | 0.0 | Routine        | 99 |
| 40.2.10 | 0.3  | 0.0 | 0.0 | 0.0 | Routine        | 99 |
| 40.2.2  | 0.2  | 0.0 | 0.0 | 0.0 | Routine        | 99 |
| 40.2.3  | 0.2  | 0.0 | 0.0 | 0.0 | Routine        | 99 |

Ray

|        |      |     |     |     |          |    |
|--------|------|-----|-----|-----|----------|----|
| 40.2.4 | 0.2  | 0.0 | 0.0 | 0.0 | Routine  | 99 |
| 40.2.5 | 0.3  | 0.0 | 0.0 | 0.0 | Routine  | 99 |
| 40.2.6 | 0.4  | 0.0 | 0.0 | 0.0 | Routine  | 99 |
| 40.2.7 | 1.3  | 0.0 | 0.0 | 0.0 | Routine  | 99 |
| 40.2.8 | 0.8  | 0.0 | 0.0 | 0.0 | Periodic | 4  |
| 40.2.9 | 0.1  | 0.0 | 0.0 | 0.0 | Routine  | 99 |
| 40.3   | 1.4  | 0.0 | 0.0 | 0.0 | Routine  | 99 |
| 5      | 5.0  | 0.1 | 0.0 | 0.0 | Routine  | 99 |
| 6      | 4.5  | 0.0 | 0.0 | 0.0 | Routine  | 99 |
| 7      | 19.8 | 3.3 | 0.0 | 0.4 | Routine  | 99 |
| 8      | 0.0  | 0.4 | 0.0 | 9.0 | Upgrade  | 3  |
| 9      | 11.5 | 0.7 | 0.0 | 0.0 | Periodic | 1  |

6/5/04

Laporan Analisis

Deskripsi Analisis

Laporan Bulanan (MAREK 2021)

| Tahun | No. work   |               | No. work   |               | Total |
|-------|------------|---------------|------------|---------------|-------|
|       | Back (day) | Working (day) | Back (day) | Working (day) |       |
| 2021  | 527        | 63            | 22         | 58            | 643   |
| 2022  | 517        | 62            | 33         | 21            | 613   |
| 2023  | 478        | 61            | 33         | 85            | 657   |
| 2024  | 458        | 67            | 26         | 100           | 651   |
| 2025  | 444        | 77            | 21         | 119           | 661   |
| 2026  | 428        | 87            | 11         | 182           | 681   |

| Tahun | No. work |             | No. work |             | Total |
|-------|----------|-------------|----------|-------------|-------|
|       | Back (%) | Working (%) | Back (%) | Working (%) |       |
| 2021  | 81%      | 19%         | 37%      | 2%          | 97%   |
| 2022  | 79%      | 9%          | 7%       | 11%         | 111%  |
| 2023  | 71%      | 14%         | 2%       | 13%         | 100%  |
| 2024  | 69%      | 13%         | 2%       | 13%         | 107%  |
| 2025  | 67%      | 13%         | 1%       | 18%         | 109%  |
| 2026  | 64%      | 13%         | 2%       | 23%         | 112%  |

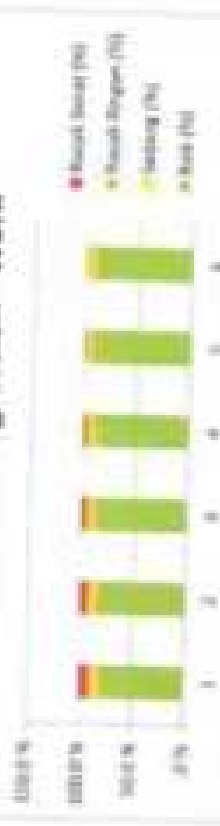
| Tahun | Group      |               | Group      |               | Total |
|-------|------------|---------------|------------|---------------|-------|
|       | Back (day) | Working (day) | Back (day) | Working (day) |       |
| 2021  | 527        | 63            | 17         | 59            | 613   |
| 2022  | 514        | 58            | 1          | 48            | 621   |
| 2023  | 512        | 58            | 1          | 81            | 652   |
| 2024  | 508        | 71            | 1          | 99            | 689   |
| 2025  | 487        | 66            | 8          | 9             | 661   |
| 2026  | 459        | 77            | 8          | 7             | 651   |

| Tahun | Group    |             | Group    |             | Total |
|-------|----------|-------------|----------|-------------|-------|
|       | Back (%) | Working (%) | Back (%) | Working (%) |       |
| 2021  | 86%      | 10%         | 2%       | 9%          | 97%   |
| 2022  | 84%      | 9%          | 1%       | 7%          | 101%  |
| 2023  | 82%      | 9%          | 1%       | 5%          | 97%   |
| 2024  | 80%      | 8%          | 1%       | 6%          | 95%   |
| 2025  | 82%      | 1%          | 1%       | 6%          | 90%   |
| 2026  | 81%      | 8%          | 1%       | 6%          | 96%   |

Condition Progression - No work



Condition Progression - Work



Handwritten signature





| Year | Month | Day | Event | Location | Time | Remarks |
|------|-------|-----|-------|----------|------|---------|
| 2018 | Jan   | 1   | ...   | ...      | ...  | ...     |
| 2018 | Jan   | 2   | ...   | ...      | ...  | ...     |
| 2018 | Jan   | 3   | ...   | ...      | ...  | ...     |
| 2018 | Jan   | 4   | ...   | ...      | ...  | ...     |
| 2018 | Jan   | 5   | ...   | ...      | ...  | ...     |
| 2018 | Jan   | 6   | ...   | ...      | ...  | ...     |
| 2018 | Jan   | 7   | ...   | ...      | ...  | ...     |
| 2018 | Jan   | 8   | ...   | ...      | ...  | ...     |
| 2018 | Jan   | 9   | ...   | ...      | ...  | ...     |
| 2018 | Jan   | 10  | ...   | ...      | ...  | ...     |
| 2018 | Jan   | 11  | ...   | ...      | ...  | ...     |
| 2018 | Jan   | 12  | ...   | ...      | ...  | ...     |
| 2018 | Jan   | 13  | ...   | ...      | ...  | ...     |
| 2018 | Jan   | 14  | ...   | ...      | ...  | ...     |
| 2018 | Jan   | 15  | ...   | ...      | ...  | ...     |
| 2018 | Jan   | 16  | ...   | ...      | ...  | ...     |
| 2018 | Jan   | 17  | ...   | ...      | ...  | ...     |
| 2018 | Jan   | 18  | ...   | ...      | ...  | ...     |
| 2018 | Jan   | 19  | ...   | ...      | ...  | ...     |
| 2018 | Jan   | 20  | ...   | ...      | ...  | ...     |
| 2018 | Jan   | 21  | ...   | ...      | ...  | ...     |
| 2018 | Jan   | 22  | ...   | ...      | ...  | ...     |
| 2018 | Jan   | 23  | ...   | ...      | ...  | ...     |
| 2018 | Jan   | 24  | ...   | ...      | ...  | ...     |
| 2018 | Jan   | 25  | ...   | ...      | ...  | ...     |
| 2018 | Jan   | 26  | ...   | ...      | ...  | ...     |
| 2018 | Jan   | 27  | ...   | ...      | ...  | ...     |
| 2018 | Jan   | 28  | ...   | ...      | ...  | ...     |
| 2018 | Jan   | 29  | ...   | ...      | ...  | ...     |
| 2018 | Jan   | 30  | ...   | ...      | ...  | ...     |
| 2018 | Jan   | 31  | ...   | ...      | ...  | ...     |
| 2018 | Feb   | 1   | ...   | ...      | ...  | ...     |
| 2018 | Feb   | 2   | ...   | ...      | ...  | ...     |
| 2018 | Feb   | 3   | ...   | ...      | ...  | ...     |
| 2018 | Feb   | 4   | ...   | ...      | ...  | ...     |
| 2018 | Feb   | 5   | ...   | ...      | ...  | ...     |
| 2018 | Feb   | 6   | ...   | ...      | ...  | ...     |
| 2018 | Feb   | 7   | ...   | ...      | ...  | ...     |
| 2018 | Feb   | 8   | ...   | ...      | ...  | ...     |
| 2018 | Feb   | 9   | ...   | ...      | ...  | ...     |
| 2018 | Feb   | 10  | ...   | ...      | ...  | ...     |
| 2018 | Feb   | 11  | ...   | ...      | ...  | ...     |
| 2018 | Feb   | 12  | ...   | ...      | ...  | ...     |
| 2018 | Feb   | 13  | ...   | ...      | ...  | ...     |
| 2018 | Feb   | 14  | ...   | ...      | ...  | ...     |
| 2018 | Feb   | 15  | ...   | ...      | ...  | ...     |
| 2018 | Feb   | 16  | ...   | ...      | ...  | ...     |
| 2018 | Feb   | 17  | ...   | ...      | ...  | ...     |
| 2018 | Feb   | 18  | ...   | ...      | ...  | ...     |
| 2018 | Feb   | 19  | ...   | ...      | ...  | ...     |
| 2018 | Feb   | 20  | ...   | ...      | ...  | ...     |
| 2018 | Feb   | 21  | ...   | ...      | ...  | ...     |
| 2018 | Feb   | 22  | ...   | ...      | ...  | ...     |
| 2018 | Feb   | 23  | ...   | ...      | ...  | ...     |
| 2018 | Feb   | 24  | ...   | ...      | ...  | ...     |
| 2018 | Feb   | 25  | ...   | ...      | ...  | ...     |
| 2018 | Feb   | 26  | ...   | ...      | ...  | ...     |
| 2018 | Feb   | 27  | ...   | ...      | ...  | ...     |
| 2018 | Feb   | 28  | ...   | ...      | ...  | ...     |
| 2018 | Feb   | 29  | ...   | ...      | ...  | ...     |
| 2018 | Mar   | 1   | ...   | ...      | ...  | ...     |
| 2018 | Mar   | 2   | ...   | ...      | ...  | ...     |
| 2018 | Mar   | 3   | ...   | ...      | ...  | ...     |
| 2018 | Mar   | 4   | ...   | ...      | ...  | ...     |
| 2018 | Mar   | 5   | ...   | ...      | ...  | ...     |
| 2018 | Mar   | 6   | ...   | ...      | ...  | ...     |
| 2018 | Mar   | 7   | ...   | ...      | ...  | ...     |
| 2018 | Mar   | 8   | ...   | ...      | ...  | ...     |
| 2018 | Mar   | 9   | ...   | ...      | ...  | ...     |
| 2018 | Mar   | 10  | ...   | ...      | ...  | ...     |
| 2018 | Mar   | 11  | ...   | ...      | ...  | ...     |
| 2018 | Mar   | 12  | ...   | ...      | ...  | ...     |
| 2018 | Mar   | 13  | ...   | ...      | ...  | ...     |
| 2018 | Mar   | 14  | ...   | ...      | ...  | ...     |
| 2018 | Mar   | 15  | ...   | ...      | ...  | ...     |
| 2018 | Mar   | 16  | ...   | ...      | ...  | ...     |
| 2018 | Mar   | 17  | ...   | ...      | ...  | ...     |
| 2018 | Mar   | 18  | ...   | ...      | ...  | ...     |
| 2018 | Mar   | 19  | ...   | ...      | ...  | ...     |
| 2018 | Mar   | 20  | ...   | ...      | ...  | ...     |
| 2018 | Mar   | 21  | ...   | ...      | ...  | ...     |
| 2018 | Mar   | 22  | ...   | ...      | ...  | ...     |
| 2018 | Mar   | 23  | ...   | ...      | ...  | ...     |
| 2018 | Mar   | 24  | ...   | ...      | ...  | ...     |
| 2018 | Mar   | 25  | ...   | ...      | ...  | ...     |
| 2018 | Mar   | 26  | ...   | ...      | ...  | ...     |
| 2018 | Mar   | 27  | ...   | ...      | ...  | ...     |
| 2018 | Mar   | 28  | ...   | ...      | ...  | ...     |
| 2018 | Mar   | 29  | ...   | ...      | ...  | ...     |
| 2018 | Mar   | 30  | ...   | ...      | ...  | ...     |
| 2018 | Mar   | 31  | ...   | ...      | ...  | ...     |

stop





| Sl. No. | Name of the Candidate | Grade | Roll No. | Mark | Percentage |
|---------|-----------------------|-------|----------|------|------------|
| 1       | ABHIRAM K             | 10    | 101      | 85   | 85         |
| 2       | ADARSH K              | 10    | 102      | 80   | 80         |
| 3       | ADITHYAN K            | 10    | 103      | 75   | 75         |
| 4       | ADITHYAN K            | 10    | 104      | 70   | 70         |
| 5       | ADITHYAN K            | 10    | 105      | 65   | 65         |
| 6       | ADITHYAN K            | 10    | 106      | 60   | 60         |
| 7       | ADITHYAN K            | 10    | 107      | 55   | 55         |
| 8       | ADITHYAN K            | 10    | 108      | 50   | 50         |
| 9       | ADITHYAN K            | 10    | 109      | 45   | 45         |
| 10      | ADITHYAN K            | 10    | 110      | 40   | 40         |
| 11      | ADITHYAN K            | 10    | 111      | 35   | 35         |
| 12      | ADITHYAN K            | 10    | 112      | 30   | 30         |
| 13      | ADITHYAN K            | 10    | 113      | 25   | 25         |
| 14      | ADITHYAN K            | 10    | 114      | 20   | 20         |
| 15      | ADITHYAN K            | 10    | 115      | 15   | 15         |
| 16      | ADITHYAN K            | 10    | 116      | 10   | 10         |
| 17      | ADITHYAN K            | 10    | 117      | 5    | 5          |
| 18      | ADITHYAN K            | 10    | 118      | 0    | 0          |
| 19      | ADITHYAN K            | 10    | 119      | 0    | 0          |
| 20      | ADITHYAN K            | 10    | 120      | 0    | 0          |
| 21      | ADITHYAN K            | 10    | 121      | 0    | 0          |
| 22      | ADITHYAN K            | 10    | 122      | 0    | 0          |
| 23      | ADITHYAN K            | 10    | 123      | 0    | 0          |
| 24      | ADITHYAN K            | 10    | 124      | 0    | 0          |
| 25      | ADITHYAN K            | 10    | 125      | 0    | 0          |
| 26      | ADITHYAN K            | 10    | 126      | 0    | 0          |
| 27      | ADITHYAN K            | 10    | 127      | 0    | 0          |
| 28      | ADITHYAN K            | 10    | 128      | 0    | 0          |
| 29      | ADITHYAN K            | 10    | 129      | 0    | 0          |
| 30      | ADITHYAN K            | 10    | 130      | 0    | 0          |
| 31      | ADITHYAN K            | 10    | 131      | 0    | 0          |
| 32      | ADITHYAN K            | 10    | 132      | 0    | 0          |
| 33      | ADITHYAN K            | 10    | 133      | 0    | 0          |
| 34      | ADITHYAN K            | 10    | 134      | 0    | 0          |
| 35      | ADITHYAN K            | 10    | 135      | 0    | 0          |
| 36      | ADITHYAN K            | 10    | 136      | 0    | 0          |
| 37      | ADITHYAN K            | 10    | 137      | 0    | 0          |
| 38      | ADITHYAN K            | 10    | 138      | 0    | 0          |
| 39      | ADITHYAN K            | 10    | 139      | 0    | 0          |
| 40      | ADITHYAN K            | 10    | 140      | 0    | 0          |
| 41      | ADITHYAN K            | 10    | 141      | 0    | 0          |
| 42      | ADITHYAN K            | 10    | 142      | 0    | 0          |
| 43      | ADITHYAN K            | 10    | 143      | 0    | 0          |
| 44      | ADITHYAN K            | 10    | 144      | 0    | 0          |
| 45      | ADITHYAN K            | 10    | 145      | 0    | 0          |
| 46      | ADITHYAN K            | 10    | 146      | 0    | 0          |
| 47      | ADITHYAN K            | 10    | 147      | 0    | 0          |
| 48      | ADITHYAN K            | 10    | 148      | 0    | 0          |
| 49      | ADITHYAN K            | 10    | 149      | 0    | 0          |
| 50      | ADITHYAN K            | 10    | 150      | 0    | 0          |

104





Rangkuman

Provinsi: Bangka Belitung

Kabupaten: Belitung

| Kategori   | Anggaran Estimasi (Rp. juta) |               | Panjang (Km) |       |
|--|------------------------------|---------------|--------------|-------|
|  | APBN                         | TOTAL         | APBN         | TOTAL |
| PR   | 2.990                        | 2.990         | 117,2        | 117,2 |
| RK   | 1.502                        | 1.502         | 30,2         | 30,2  |
| Perbaikan  | 0                            | 0             | 0,0          | 0,0   |
| Bertula  | 10.621                       | 10.621        | 8,3          | 8,3   |
| Rehabilitasi                                     | 0                            | 0             | 0,0          | 0,0   |
| Peningkatan Struktur                             | 0                            | 0             | 0,0          | 0,0   |
| <b>Jumlah pekerjaan pemeliharaan - Jalan</b>     | <b>15.114</b>                | <b>15.114</b> |              |       |
| Harga PR - Jembatan                              |                              | 0,0           |              |       |
| Harga PR - Garong-gorong                         |                              | 0,0           |              |       |
| Harga PR - Tembok Penahan                        |                              | 0,0           |              |       |
| Harga RK - Jembatan                              |                              | 0,0           |              |       |
| Harga RK - Garong-gorong                         |                              | 0,0           |              |       |
| Harga RK - Tembok Penahan                        |                              | 0,0           |              |       |
| <b>Jumlah pekerjaan pemeliharaan - Struktur</b>  | <b>0,0</b>                   | <b>0,0</b>    |              |       |
| Pelebaran  | 16.161                       | 16.161        | 8,3          | 8,3   |
| <b>Jumlah pekerjaan pemeliharaan + pelebaran</b> | <b>31.276</b>                | <b>31.276</b> |              |       |
| Keselamatan Jalan (5%)                           | 0                            | 0             |              |       |
| <b>Total Keseluruhan</b>                         | <b>31.276</b>                | <b>31.276</b> |              |       |
| Anggaran   |                              | 0             |              |       |
| <b>Sisa</b>                                      | <b>0</b>                     | <b>0</b>      |              |       |

Panjang Total

|                             |       |
|-----------------------------|-------|
| Panjang Jaringan Total (km) | 145,2 |
| Panjang Jalan Aspal (km)    | 145,2 |
| Cakupan PR (% Jalan Aspal)  | 80,7% |
| Cakupan MW (% Jalan Aspal)  | 5,7%  |

| Sumber Dana | Bagian |        |
|-------------|--------|--------|
| APBN        | 100%   | 14.718 |

Database: D:\3. PHID Tahun 2021 (Tahun 3)\Program PRMS Uraian 2022\PRMSDB-V1.1 - KAB BELITUNG 2021

*[Handwritten signature]*







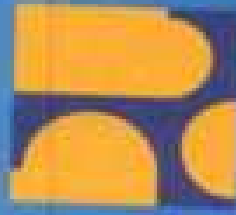






# HASIL LAPORAN P/KRMS

BELITUNG, AGUSTUS 2021



# PROVINCIAL/ KABUPATEN ROAD MANAGEMENT SYSTEM (P/KRMS)

- ▶ DESKRIPSI SINGKAT
- ▶ Provincial/ Kabupaten Road Management System (P/KRMS) adalah alat bantu yang didesain khusus untuk perencanaan, pemrograman dan penganggaran (PPP) yang dapat digunakan di tingkat provinsi atau kabupaten.
- ▶ PKRMS berperan sebagai sumber database utama dan alat analisis untuk keperluan perencanaan yang menampung data kondisi, inventarisasi, data proyek, sejarah jalan, dan Peta.

# P/KRMS

- ▶ P/KRMS sebagai alat bantu perencanaan, pemrograman dan penganggaran (PPP). Berikut Siklus PPP sebagai berikut :



Handwritten signature or mark in the top right corner.



# TAMPILAN UTAMA P/KRMS

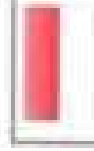
RMS - Main menu

Menu Utama

- Administrasi
- Pengaturan Jaringan Jalan
- Struktur Lalu Lintas
- Harga Satuan
- Analisis dan Pemrograman**
- Kondor Analisis
- Proyek Jalan
- Laporan
- Peta
- Pengaturan Lain



Pilih Bahasa



Konsum

Asaf





# TAMPILAN LAPORAN

The screenshot displays a web application interface with a sidebar menu on the left and a main content area. The sidebar menu includes options like 'Administrasi', 'Peraturan Jaringan', 'Struktur', 'Lalu Lintas', 'Harga Satuan', 'Analisis dan Perograman Koridor Analisis', 'Proyek Jalan', 'Laporan', 'Peta', and 'Peraturan Lain'. The main content area shows a report titled 'Laporan Analisis' with a sub-header 'Report Analysis'. The report content includes the following text:

**Analisis:**

|                               |          |
|-------------------------------|----------|
| PHUD 2021 KAB. BELITUNG       | Corridor |
| Kondisi Jalan 2020            |          |
| Usulan Program PHUD 2022-2024 |          |
| Kec. Tanjungpandan            |          |

At the bottom of the page, there is a footer with the text: 'PRIMS: VI.1.01 | Pengguna Adminby Database: D11. DATA STRUKTUR Verifikasi tahun 2021-2024. Operasional PRIMS untuk perencanaan di Bangka Belitung

Staff

# TAMPILAN PEMETAAN



6/1/2024

# DAFTAR RUAS TPI (TREATMENT PRIORITY INDEX)

Provinsi Bengkulu  
Kabupaten Bengkulu  
Sampul Laporan Survey PPMMS

| No. Urut | Nama Ruas | MPK (5 yearly - Total Harga Maintenance) | TPI Class   | TPI   | Work Order | Package Name  | Year |
|----------|-----------|--|-------------|-------|------------|---------------|------|
| 1        | 1.1.1     | 0.0                                      | 00-CONCRETE | 0.0   | 2006       | Laporan PPMMS | 1    |
| 2        | 20        | 80.1                                     | 00-CONCRETE | 0.0   | 2006       | Laporan PPMMS | 1    |
| 3        | 16.14.2   | 0.0                                      | 00-CONCRETE | 0.0   | 2006       | Laporan PPMMS | 1    |
| 4        | 16.18.1   | 0.0                                      | 00-CONCRETE | 0.0   | 2006       | Laporan PPMMS | 1    |
| 5        | 16.17     | 128.1                                    | 00-CONCRETE | 0.0   | 2006       | Laporan PPMMS | 1    |
| 6        | 1.05.1    | 50.1                                     | 10-AC       | 128.5 | 2006       | Laporan PPMMS | 1    |
| 7        | 16.118.5  | 108.7                                    | 10-AC       | 115.1 | 2006       | Laporan PPMMS | 1    |
| 8        | 1.04.8    | 80.1                                     | 10-AC       | 109.8 | 2006       | Laporan PPMMS | 1    |
| 9        | 16.114    | 60.8                                     | 10-AC       | 108.8 | 2006       | Laporan PPMMS | 1    |
| 10       | 16.11.2   | 1.487.8                                  | 10-AC       | 187.0 | 2006       | Laporan PPMMS | 1    |
| 11       | 16.8.1    | 56.7                                     | 10-AC       | 183.8 | 2006       | Laporan PPMMS | 1    |
| 12       | 1.04.14   | 83.4                                     | 10-AC       | 173.8 | 2006       | Laporan PPMMS | 1    |
| 13       | 16.107.1  | 102.8                                    | 10-AC       | 156.1 | 2006       | Laporan PPMMS | 1    |
| 14       | 16.9.1    | 94.0                                     | 10-AC       | 150.2 | 2006       | Laporan PPMMS | 1    |
| 15       | 16.148.2  | 1.093.4                                  | 10-AC       | 147.8 | 2006       | Laporan PPMMS | 1    |
| 16       | 16.7      | 807.5                                    | 10-AC       | 145.8 | 2006       | Laporan PPMMS | 1    |
| 17       | 16.112.2  | 80.5                                     | 10-AC       | 143.6 | 2006       | Laporan PPMMS | 1    |
| 18       | 16.96.2   | 1.801.7                                  | 10-AC       | 122.3 | 2006       | Laporan PPMMS | 1    |
| 19       | 16.9.1    | 505.7                                    | 10-AC       | 118.1 | 2006       | Laporan PPMMS | 1    |
| 20       | 16.96.1   | 642.4                                    | 10-AC       | 115.4 | 2006       | Laporan PPMMS | 1    |
| 21       | 16.118.2  | 775.4                                    | 10-AC       | 114.0 | 2006       | Laporan PPMMS | 1    |
| 22       | 16.10     | 631.8                                    | 10-AC       | 109.5 | 2006       | Laporan PPMMS | 1    |
| 23       | 16.117.1  | 802.1                                    | 10-AC       | 106.7 | 2006       | Laporan PPMMS | 1    |
| 24       | 16.76.1   | 107.5                                    | 10-AC       | 105.7 | 2006       | Laporan PPMMS | 1    |
| 25       | 16.80     | 645.9                                    | 10-AC       | 103.0 | 2006       | Laporan PPMMS | 1    |
| 26       | 16.83     |  | 10-AC       |       | 2006       | Laporan PPMMS | 1    |

Handwritten signature

# DAFTAR RUAS TPI (TREATMENT PRIORITY INDEX)

| No | J. Gd. B. | (Rn. Peralatan) Temp. Air Kotoran 3 | 121-11  | 50-B | 2M/W | Laporan PERMAS |
|----|-----------|-------------------------------------|---------|------|------|----------------|
| 54 | 16.118.7  | (Rn. Saringan Mula-mula)            | 811.8   | 50.8 | 2M/W | Laporan PERMAS |
| 55 | 16.119.1  | (Rn. Saringan Mula-mula)            | 206.8   | 50.8 | 2M/W | Laporan PERMAS |
| 56 | 16.119.2  | (Rn. Saringan Mula-mula)            | 1.426.4 | 50.8 | 2M/W | Laporan PERMAS |
| 57 | 16.119.3  | (Rn. Saringan Mula-mula)            | 831.8   | 50.2 | 2M/W | Laporan PERMAS |
| 58 | 16.119.4  | (Rn. Saringan Mula-mula)            | 187.2   | 54.9 | 2M/W | Laporan PERMAS |
| 59 | 16.119.5  | (Rn. Saringan Mula-mula)            | 250.7   | 54.9 | 2M/W | Laporan PERMAS |
| 60 | 16.119.6  | (Rn. Saringan Mula-mula)            | 2.588.8 | 54.9 | 2M/W | Laporan PERMAS |
| 61 | 1.120     | (Rn. Saringan Mula-mula)            | 8100.1  | 54.7 | 2M/W | Laporan PERMAS |
| 62 | 1.121.1   | (Rn. Saringan Mula-mula)            | 222.8   | 54.7 | 2M/W | Laporan PERMAS |
| 63 | 1.121.2   | (Rn. Saringan Mula-mula)            | 988.0   | 50.2 | 2M/W | Laporan PERMAS |
| 64 | 1.121.3   | (Rn. Saringan Mula-mula)            | 547.8   | 83.7 | 2M/W | Laporan PERMAS |
| 65 | 1.121.4   | (Rn. Saringan Mula-mula)            | 557.2   | 83.5 | 2M/W | Laporan PERMAS |
| 66 | 1.121.5   | (Rn. Saringan Mula-mula)            | 178.5   | 83.7 | 2M/W | Laporan PERMAS |
| 67 | 1.121.6   | (Rn. Saringan Mula-mula)            | 1.991.7 | 87.8 | 2M/W | Laporan PERMAS |
| 68 | 1.121.7   | (Rn. Saringan Mula-mula)            | 348.5   | 88.8 | 2M/W | Laporan PERMAS |
| 69 | 1.121.8   | (Rn. Saringan Mula-mula)            | 2.742.7 | 86.8 | 2M/W | Laporan PERMAS |
| 70 | 1.121.9   | (Rn. Saringan Mula-mula)            | 1.727.1 | 84.8 | 2M/W | Laporan PERMAS |
| 71 | 1.122.1   | (Rn. Saringan Mula-mula)            | 287.0   | 84.0 | 2M/W | Laporan PERMAS |
| 72 | 1.122.2   | (Rn. Saringan Mula-mula)            | 880.7   | 81.4 | 2M/W | Laporan PERMAS |
| 73 | 1.122.3   | (Rn. Saringan Mula-mula)            | 1.708.6 | 80.5 | 2M/W | Laporan PERMAS |
| 74 | 1.122.4   | (Rn. Saringan Mula-mula)            | 1.234.8 | 80.4 | 2M/W | Laporan PERMAS |
| 75 | 1.122.5   | (Rn. Saringan Mula-mula)            | 117.8   | 28.6 | 2M/W | Laporan PERMAS |
| 76 | 1.122.6   | (Rn. Saringan Mula-mula)            | 529.0   | 28.5 | 2M/W | Laporan PERMAS |
| 77 | 1.122.7   | (Rn. Saringan Mula-mula)            | 725.7   | 28.7 | 2M/W | Laporan PERMAS |
| 78 | 1.122.8   | (Rn. Saringan Mula-mula)            | 89.7    | 28.2 | 2M/W | Laporan PERMAS |
| 79 | 1.122.9   | (Rn. Saringan Mula-mula)            | 883.8   | 20.4 | 2M/W | Laporan PERMAS |
| 80 | 1.123     | (Rn. Saringan Mula-mula)            | 2.748.0 | 19.5 | 2M/W | Laporan PERMAS |
| 81 | 1.124     | (Rn. Saringan Mula-mula)            | 161.2   | 17.5 | 2M/W | Laporan PERMAS |
| 82 | 1.125     | (Rn. Saringan Mula-mula)            | 509.3   | 17.2 | 2M/W | Laporan PERMAS |
| 83 | 1.126     | (Rn. Saringan Mula-mula)            | 881.3   | 15.9 | 2M/W | Laporan PERMAS |
| 84 | 1.127     | (Rn. Saringan Mula-mula)            | 6.077.4 | 15.0 | 2M/W | Laporan PERMAS |
| 85 | 1.128     | (Rn. Saringan Mula-mula)            | 588.1   | 14.7 | 2M/W | Laporan PERMAS |
| 86 | 1.129     | (Rn. Saringan Mula-mula)            | 588.8   | 12.0 | 2M/W | Laporan PERMAS |
| 87 | 1.130     | (Rn. Saringan Mula-mula)            | 1.911.8 | 11.7 | 2M/W | Laporan PERMAS |
| 88 | 1.131     | (Rn. Saringan Mula-mula)            | 2.021.6 | 11.1 | 2M/W | Laporan PERMAS |
| 89 | 1.132     | (Rn. Saringan Mula-mula)            | 2.801.1 | 11.0 | 2M/W | Laporan PERMAS |

10/1/2017

# KONDISI DAN TIPE PEMELIHARAAN

| Node Index | Radius (mm) | Lebar (mm) | Tinggi (mm) | Radius Bogen (mm) | Radius Bore (mm) | Pemeliharaan | Tipe |
|------------|-------------|------------|-------------|-------------------|------------------|--------------|------|
| 1.1        | 0.4         | 0.0        | 0.0         | 0.0               | 0.0              | Rehabilitasi | 1    |
| 1.10       | 1.1         | 0.6        | 0.0         | 0.0               | 0.0              | Reactive     | 99   |
| 1.11       | 0.1         | 0.0        | 0.0         | 0.0               | 0.0              | Reactive     | 99   |
| 1.12       | 0.0         | 0.2        | 0.0         | 0.0               | 0.0              | Rehabilitasi | 1    |
| 1.13.1     | 0.4         | 0.0        | 0.0         | 0.0               | 0.0              | Reactive     | 99   |
| 1.13.2     | 0.0         | 0.0        | 0.0         | 0.0               | 0.0              | Reactive     | 99   |
| 1.14       | 0.2         | 0.0        | 0.0         | 0.0               | 0.0              | Reactive     | 99   |
| 1.15.1     | 0.4         | 0.0        | 0.0         | 0.0               | 0.0              | Reactive     | 99   |
| 1.15.2     | 0.1         | 0.0        | 0.0         | 0.0               | 0.0              | Reactive     | 99   |
| 1.16       | 0.5         | 0.3        | 0.0         | 0.0               | 0.0              | Periodic     | 1    |
| 1.17       | 0.2         | 0.1        | 0.0         | 0.0               | 0.0              | Reactive     | 99   |
| 1.18       | 0.5         | 0.0        | 0.0         | 0.0               | 0.0              | Reactive     | 99   |
| 1.19       | 0.2         | 0.0        | 0.0         | 0.0               | 0.0              | Reactive     | 99   |
| 1.2        | 1.1         | 0.3        | 0.0         | 0.0               | 0.0              | Reactive     | 99   |
| 1.20       | 0.6         | 0.1        | 0.0         | 0.0               | 0.0              | Reactive     | 99   |
| 1.21       | 0.9         | 0.0        | 0.0         | 0.0               | 0.0              | Reactive     | 99   |
| 1.22       | 0.5         | 0.1        | 0.0         | 0.0               | 0.0              | Reactive     | 99   |
| 1.23       | 1.1         | 0.0        | 0.0         | 0.0               | 0.0              | Reactive     | 99   |
| 1.24       | 1.0         | 0.2        | 0.4         | 0.0               | 0.0              | Rehabilitasi | 1    |
| 1.25       | 0.9         | 0.2        | 0.0         | 0.0               | 0.0              | Periodic     | 1    |
| 1.26       | 0.1         | 0.1        | 0.0         | 0.0               | 0.0              | Reactive     | 99   |
| 1.27       | 0.1         | 0.0        | 0.0         | 0.0               | 0.0              | Reactive     | 99   |
| 1.28       | 1.1         | 0.0        | 0.0         | 0.0               | 0.0              | Reactive     | 99   |
| 1.29       | 0.6         | 0.1        | 0.0         | 0.0               | 0.0              | Reactive     | 99   |
| 1.31.1     | 1.0         | 0.1        | 0.0         | 0.0               | 0.0              | Reactive     | 99   |
| 1.31.2     | 0.1         | 0.1        | 0.0         | 0.0               | 0.0              | Periodic     | 1    |
| 1.33       | 0.0         | 0.1        | 0.0         | 0.0               | 0.0              | Reactive     | 99   |
| 1.34       | 0.0         | 0.0        | 0.0         | 0.0               | 0.0              | Reactive     | 99   |
| 1.35       | 1.1         | 0.0        | 0.0         | 0.0               | 0.0              | Rehabilitasi | 1    |
| 1.36       | 0.0         | 0.0        | 0.0         | 0.0               | 0.0              | Reactive     | 99   |

|        |     |     |     |     |     |              |    |
|--------|-----|-----|-----|-----|-----|--------------|----|
| 1.44.6 | 0.1 | 0.2 | 0.0 | 0.0 | 0.0 | Periodic     | 1  |
| 1.44.7 | 0.1 | 0.0 | 0.1 | 0.0 | 0.0 | Reactive     | 99 |
| 1.44.8 | 0.0 | 0.1 | 0.0 | 0.0 | 0.0 | Periodic     | 1  |
| 1.44.9 | 0.2 | 0.0 | 0.0 | 0.0 | 0.0 | Reactive     | 99 |
| 1.45.1 | 0.1 | 0.3 | 0.0 | 0.0 | 0.0 | Periodic     | 1  |
| 1.45.2 | 0.3 | 0.0 | 0.0 | 0.0 | 0.0 | Reactive     | 99 |
| 1.45.3 | 0.0 | 0.1 | 0.0 | 0.0 | 0.0 | Periodic     | 1  |
| 1.45.4 | 0.2 | 0.0 | 0.0 | 0.0 | 0.0 | Reactive     | 99 |
| 1.45.5 | 0.0 | 0.1 | 0.0 | 0.1 | 0.1 | Periodic     | 1  |
| 1.46.1 | 0.3 | 0.0 | 0.0 | 0.0 | 0.0 | Reactive     | 99 |
| 1.46.2 | 0.5 | 0.0 | 0.0 | 0.0 | 0.0 | Reactive     | 99 |
| 1.46.3 | 0.2 | 0.0 | 0.0 | 0.0 | 0.0 | Reactive     | 99 |
| 1.47.1 | 1.0 | 0.0 | 0.0 | 0.0 | 0.0 | Reactive     | 99 |
| 1.47.2 | 0.5 | 0.0 | 0.0 | 0.0 | 0.0 | Reactive     | 99 |
| 1.48   | 0.6 | 0.1 | 0.0 | 0.0 | 0.0 | Reactive     | 99 |
| 1.49.1 | 1.6 | 0.0 | 0.0 | 0.0 | 0.0 | Reactive     | 99 |
| 1.49.2 | 1.1 | 0.0 | 0.0 | 0.0 | 0.0 | Reactive     | 99 |
| 1.5.1  | 0.7 | 0.3 | 0.0 | 0.1 | 0.1 | Rehabilitasi | 1  |
| 1.5.2  | 0.2 | 0.0 | 0.0 | 0.0 | 0.0 | Reactive     | 99 |
| 1.5.3  | 0.1 | 0.0 | 0.0 | 0.0 | 0.0 | Reactive     | 99 |
| 1.50   | 1.6 | 0.4 | 0.4 | 0.4 | 1.1 | Reactive     | 99 |
| 1.51   | 0.0 | 0.0 | 0.0 | 0.0 | 0.0 | Rehabilitasi | 1  |
| 1.52.1 | 1.1 | 0.0 | 0.0 | 0.0 | 0.0 | Reactive     | 99 |
| 1.52.2 | 0.4 | 0.0 | 0.0 | 0.0 | 0.0 | Reactive     | 99 |
| 1.53   | 0.1 | 0.0 | 0.0 | 0.0 | 0.0 | Rehabilitasi | 1  |
| 1.54   | 0.4 | 0.0 | 0.0 | 0.0 | 0.0 | Reactive     | 99 |
| 1.55   | 1.7 | 1.7 | 0.0 | 0.0 | 0.0 | Rehabilitasi | 1  |
| 1.56.1 | 1.7 | 0.0 | 0.0 | 0.0 | 0.0 | Reactive     | 99 |
| 1.56.2 | 1.7 | 0.0 | 0.0 | 0.0 | 0.0 | Reactive     | 99 |
| 1.57   | 0.7 | 0.2 | 0.0 | 0.0 | 0.0 | Reactive     | 99 |
| 1.58   | 1.6 | 0.4 | 0.4 | 0.4 | 1.1 | Reactive     | 99 |
| 1.59   | 1.7 | 0.0 | 0.0 | 0.0 | 0.0 | Reactive     | 99 |
| 1.60   | 1.7 | 0.0 | 0.0 | 0.0 | 0.0 | Reactive     | 99 |
| 1.61   | 1.7 | 0.0 | 0.0 | 0.0 | 0.0 | Reactive     | 99 |
| 1.62   | 1.7 | 0.0 | 0.0 | 0.0 | 0.0 | Reactive     | 99 |
| 1.63   | 1.7 | 0.0 | 0.0 | 0.0 | 0.0 | Reactive     | 99 |
| 1.64   | 1.7 | 0.0 | 0.0 | 0.0 | 0.0 | Reactive     | 99 |
| 1.65   | 1.7 | 0.0 | 0.0 | 0.0 | 0.0 | Reactive     | 99 |
| 1.66   | 1.7 | 0.0 | 0.0 | 0.0 | 0.0 | Reactive     | 99 |
| 1.67   | 1.7 | 0.0 | 0.0 | 0.0 | 0.0 | Reactive     | 99 |
| 1.68   | 1.7 | 0.0 | 0.0 | 0.0 | 0.0 | Reactive     | 99 |
| 1.69   | 1.7 | 0.0 | 0.0 | 0.0 | 0.0 | Reactive     | 99 |
| 1.70   | 1.7 | 0.0 | 0.0 | 0.0 | 0.0 | Reactive     | 99 |
| 1.71   | 1.7 | 0.0 | 0.0 | 0.0 | 0.0 | Reactive     | 99 |
| 1.72   | 1.7 | 0.0 | 0.0 | 0.0 | 0.0 | Reactive     | 99 |
| 1.73   | 1.7 | 0.0 | 0.0 | 0.0 | 0.0 | Reactive     | 99 |
| 1.74   | 1.7 | 0.0 | 0.0 | 0.0 | 0.0 | Reactive     | 99 |
| 1.75   | 1.7 | 0.0 | 0.0 | 0.0 | 0.0 | Reactive     | 99 |
| 1.76   | 1.7 | 0.0 | 0.0 | 0.0 | 0.0 | Reactive     | 99 |
| 1.77   | 1.7 | 0.0 | 0.0 | 0.0 | 0.0 | Reactive     | 99 |
| 1.78   | 1.7 | 0.0 | 0.0 | 0.0 | 0.0 | Reactive     | 99 |
| 1.79   | 1.7 | 0.0 | 0.0 | 0.0 | 0.0 | Reactive     | 99 |
| 1.79.1 | 1.7 | 0.0 | 0.0 | 0.0 | 0.0 | Reactive     | 99 |
| 1.79.2 | 1.7 | 0.0 | 0.0 | 0.0 | 0.0 | Reactive     | 99 |
| 1.8    | 0.3 | 0.0 | 0.0 | 0.0 | 0.0 | Reactive     | 99 |
| 1.81   | 0.5 | 0.0 | 0.0 | 0.0 | 0.0 | Reactive     | 99 |
| 1.82   | 1.1 | 0.2 | 0.2 | 0.2 | 0.0 | Periodic     | 1  |
| 1.83   | 1.4 | 0.2 | 0.2 | 0.2 | 0.0 | Reactive     | 99 |

1/2017





# LAPORAN ANALISIS

## Laporan Analisis

Demografi Analisis

Laporan Survey PHMMS 2021

| Tahun | No work  |            |           |                 | TOTAL |
|-------|----------|------------|-----------|-----------------|-------|
|       | Back (N) | Setang (N) | Round (N) | Round Berat (N) |       |
| 2021  | 527      | 63         | 12        | 59              | 661   |
| 2022  | 517      | 62         | 11        | 71              | 661   |
| 2023  | 670      | 92         | 13        | 85              | 861   |
| 2024  | 858      | 87         | 16        | 100             | 1061  |
| 2025  | 688      | 77         | 13        | 119             | 941   |
| 2026  | 670      | 87         | 12        | 140             | 941   |

| Tahun | No work  |            |           |                 | TOTAL |
|-------|----------|------------|-----------|-----------------|-------|
|       | Back (N) | Setang (N) | Round (N) | Round Berat (N) |       |
| 2021  | 80%      | 10%        | 2%        | 9%              | 9%    |
| 2022  | 78%      | 9%         | 2%        | 11%             | 11%   |
| 2023  | 71%      | 14%        | 2%        | 13%             | 13%   |
| 2024  | 80%      | 11%        | 2%        | 15%             | 15%   |
| 2025  | 73%      | 12%        | 3%        | 18%             | 18%   |
| 2026  | 74%      | 13%        | 2%        | 22%             | 22%   |

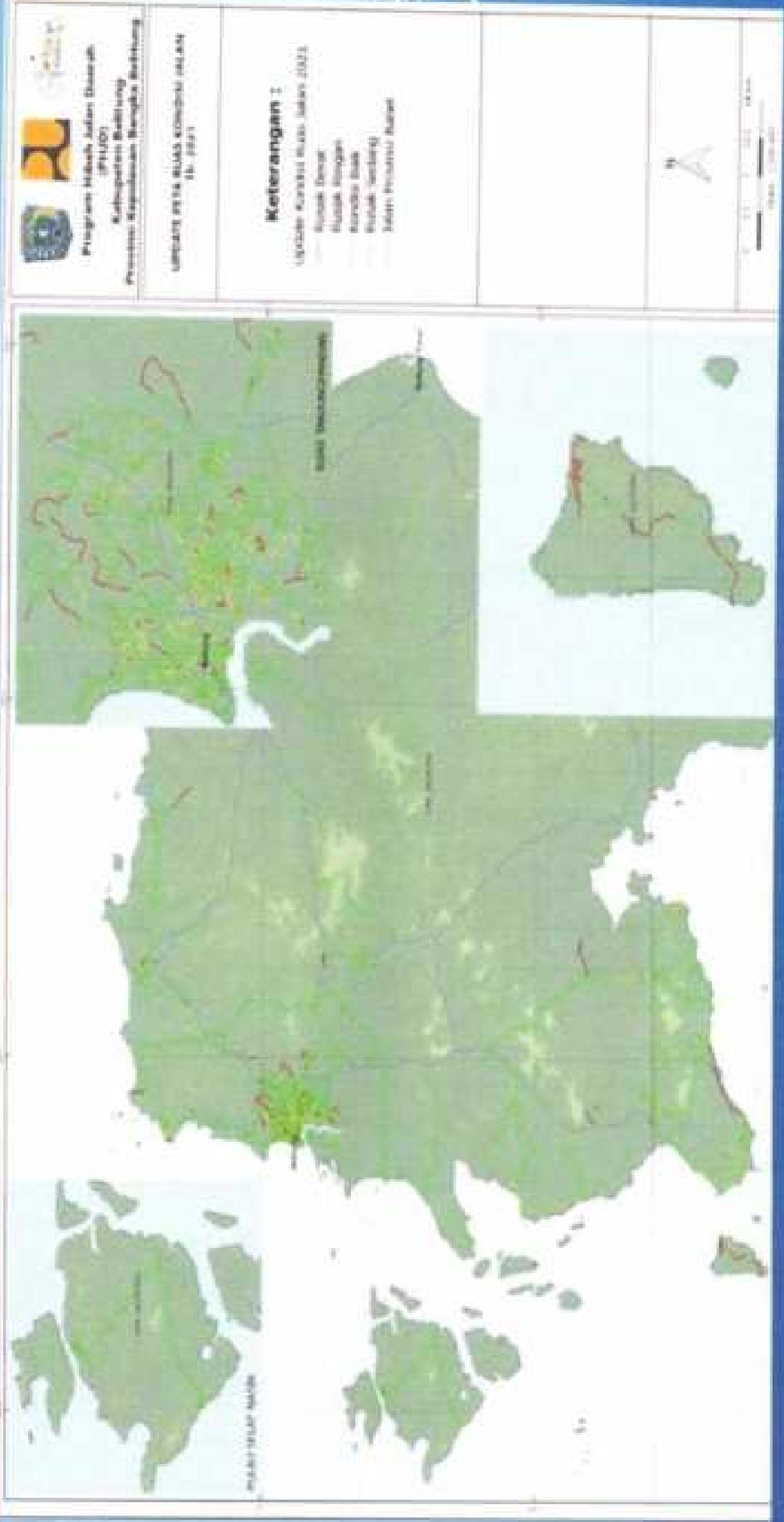
| Tahun | Work     |            |           |                 | TOTAL |
|-------|----------|------------|-----------|-----------------|-------|
|       | Back (N) | Setang (N) | Round (N) | Round Berat (N) |       |
| 2021  | 527      | 63         | 12        | 59              | 661   |
| 2022  | 534      | 58         | 1         | 48              | 641   |
| 2023  | 572      | 58         | 0         | 31              | 661   |
| 2024  | 580      | 57         | 1         | 19              | 661   |
| 2025  | 607      | 46         | 0         | 0               | 641   |
| 2026  | 604      | 55         | 1         | 2               | 661   |

| Tahun | Work     |            |           |                 | TOTAL |
|-------|----------|------------|-----------|-----------------|-------|
|       | Back (N) | Setang (N) | Round (N) | Round Berat (N) |       |
| 2021  | 80%      | 10%        | 2%        | 9%              | 9%    |
| 2022  | 84%      | 9%         | 0%        | 7%              | 7%    |
| 2023  | 87%      | 9%         | 0%        | 5%              | 5%    |
| 2024  | 89%      | 8%         | 0%        | 3%              | 3%    |
| 2025  | 92%      | 7%         | 0%        | 0%              | 0%    |
| 2026  | 91%      | 8%         | 0%        | 0%              | 0%    |





# PEMETAAN KONDISI JALAN KABUPATEN BELITUNG



Program Jalan Jalan Dukung  
(PTNPR)  
Kabupaten Belitung  
Provinsi Kalimantan Tengah Belitung

UPTD PTNPR SUAS Komplek Jalan  
No. 2021

17/04

# DOKUMENTASI SURVEY LAPANGAN



# DATA USULAN TAHUN 2022

Provinsi: Bangka Belitung  
Kabupaten: Belitung

| Komponen  | Anggaran Estimasi (Rp. Juta) |               | Panjang (Km) |       |
|---|------------------------------|---------------|--------------|-------|
|   | APBN                         | TOTAL         | APBN         | TOTAL |
| PR  | 2.990                        | 2.990         | 117,2        | 117,2 |
| RA  | 1.502                        | 1.502         | 10,2         | 10,2  |
| Pertanjang  | 0                            | 0             | 0,0          | 0,0   |
| Berkala   | 10.621                       | 10.621        | 8,1          | 8,1   |
| Mutakhir  | 0                            | 0             | 0,0          | 0,0   |
| Investigasi/Struktur                              | 0                            | 0             | 0,0          | 0,0   |
| <b>Jumlah pekerjaan pemeliharaan - jalan</b>      | <b>15.114</b>                | <b>15.114</b> |              |       |
| Harga PR - Perbaikan                              |                              | 0,0           |              |       |
| Harga PR - Gorong-gorong                          |                              | 0,0           |              |       |
| Harga PR - Trotoar Perumahan                      |                              | 0,0           |              |       |
| Harga RR - Perbaikan                              |                              | 0,0           |              |       |
| Harga RR - Gorong-gorong                          |                              | 0,0           |              |       |
| Harga RR - Trotoar Perumahan                      |                              | 0,0           |              |       |
| <b>Jumlah pekerjaan pemeliharaan - Struktur</b>   | <b>0,0</b>                   | <b>0,0</b>    |              |       |
| Perbaikan   | 16.161                       | 16.161        | 8,1          | 8,1   |
| <b>Jumlah pekerjaan pemeliharaan - perkerasan</b> | <b>30.276</b>                | <b>30.276</b> |              |       |
| Perencanaan Jalan (5%)                            | 0                            | 0             |              |       |
| <b>Total Keseluruhan</b>                          | <b>31.376</b>                | <b>31.376</b> |              |       |
| Anggaran  |                              | 0             |              |       |
| Sisa  | 0                            | 0             |              |       |

## Panjang Total

|                             |       |
|-----------------------------|-------|
| Panjang Anggaran Total (Km) | 145,2 |
| Panjang Jalan Aspal (Km)    | 145,2 |
| Capaian PR (N. Jalan Aspal) | 80,7% |
| Capaian RW (N. Jalan Aspal) | 5,7%  |

## Sumber Dana

|        |      |        |
|--------|------|--------|
| APBN   | 100% | 14.718 |
| Budget |      |        |

1,154



# SEKIAN DAN TERIMA KASIH

BELITUNG, AGUSTUS 2021

